

# 2016 EMPLOYMENT PROFILE

## EMPLOYMENT

OVERALL WORKERS EMPLOYED WITHIN MISSISSAUGA

▲ 1.3%

**425,850**

TOTAL EMPLOYMENT + CENSUS ADJUSTMENT

398,170 + 27,680

FULL-TIME EMPLOYMENT VS. PART-TIME

91% FULL-TIME, 9% PART-TIME

EMPLOYEES THAT WORK FROM HOME

**1.6%** BASED ON 88.5% SAMPLE SIZE

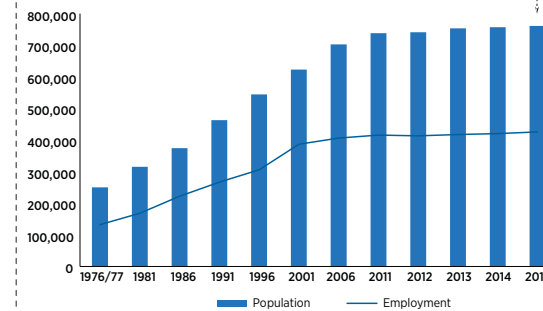
2015 TOTAL FORECASTED POPULATION

761,000 ▲ 0.5%

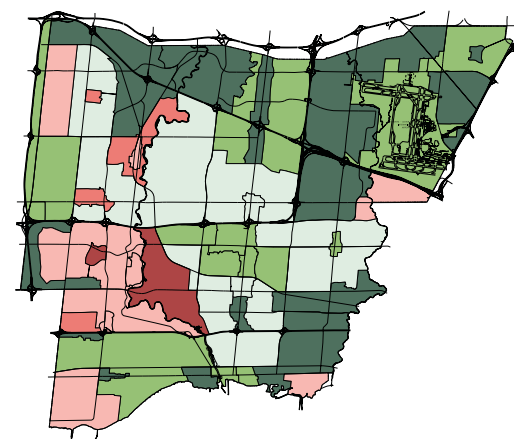
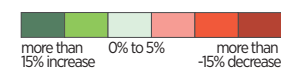
2015 EMPLOYMENT RATIO

**0.56**

WORKERS EMPLOYED AS A PROPORTION OF TOTAL POPULATION 1976-2015



EMPLOYMENT TRENDS 2011-2015



## BUSINESSES

TOTAL NUMBER OF BUSINESSES IN MISSISSAUGA

**86,170**

NUMBER OF BUSINESSES OPERATING ON BUSINESS SITES

20,585

HOME-BASED BUSINESSES\*

65,585

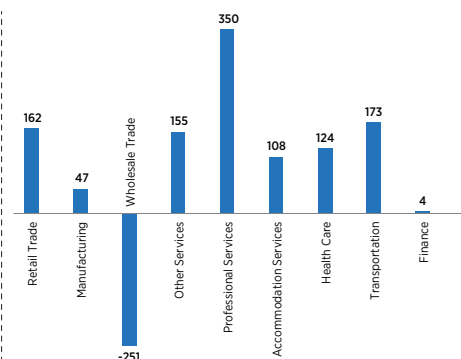
BUSINESSES THAT HAVE A WORK AT HOME ARRANGEMENT

**3.0%** BASED ON 88.5% SAMPLE SIZE

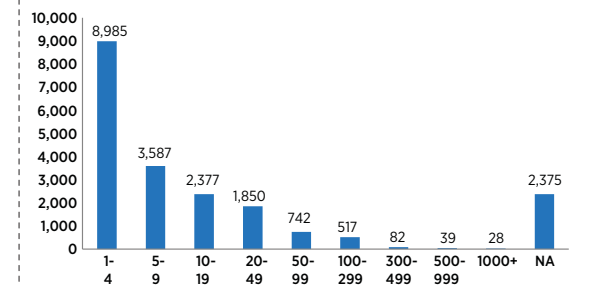
NUMBER OF BUSINESSES BY BUSINESS CLASSIFICATION FOR TOP 10 SECTORS

- 2,874 RETAIL TRADE
- 2,464 MANUFACTURING
- 2,315 WHOLESALE TRADE
- 2,252 OTHER SERVICES
- 1,856 PROFESSIONAL + TECHNICAL SERVICES
- 1,590 ACCOMMODATION + FOOD SERVICES
- 1,587 HEALTH CARE + SOCIAL ASSISTANCE
- 1,064 TRANSPORTATION + WAREHOUSING
- 754 FINANCE + INSURANCE
- 726 EDUCATIONAL SERVICES

BUSINESS SECTOR TRENDS 2011-2015



NUMBER OF BUSINESSES BY SIZE OF BUSINESS\*\*



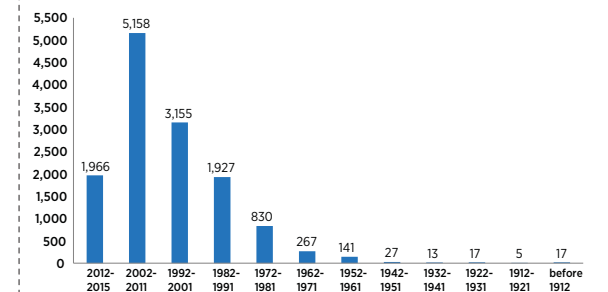
VACANCIES\*\*

3,672 ▼ 6.4%

NEW BUSINESSES OR BUSINESSES THAT MOVED BETWEEN 2014 AND 2015\*\*

2,484

NUMBER OF BUSINESSES BY YEAR ESTABLISHED BASED ON 64.5% RESPONSE



Download full size maps and read more about this at [mississauga.ca/data](http://mississauga.ca/data)

(\*) - Source: Statistics Canada, Canadian Business Patterns (CBP) Database, June 2015  
Businesses have a minimum of \$30,000 in annual revenue (non-taxable and/or taxable).  
(\*\*) - Source: Mississauga Employment Survey

Comparisons are based on the previous Annual Employment Survey

