

Help Protect Species At Risk In Cawthra Woods



Jefferson salamander
(*Ambystoma jeffersonianum*)

Cawthra Woods supports a diverse community of wildlife and vegetation including the Jefferson salamander, a unique species in areas of Ontario protected under the *Endangered Species Act, 2007*.

Cawthra Woods is a 21 hectare woodland where sugar maple, red ash, American beech and black cherry are the dominant tree species and where 339 floral species and 80 faunal species can be found.

The Jefferson salamander is a relatively large grey to brownish grey salamander. Its preferred habitat includes deciduous woodlands and pools fed by groundwater, snowmelt or surface water and deciduous woodlands. On land it prefers rodent burrows, rock fissures, downed woody debris, tree stumps and buttresses, leaf litter, and logs. The Jefferson salamander are 65-96 mm in length and can have a lifespan of up to 30 years.

The Canadian range of the Jefferson salamander is restricted to southern Ontario, particularly along the Niagara Escarpment World Biosphere Reserve.

The Jefferson salamander is a *national and provincial species at risk*. A number of factors contribute to the Jefferson salamanders' status as a threatened species at risk in Ontario. These include urbanization and habitat degradation. Measures to reverse its decline include environmental protection and restoration, as well as enhanced public awareness about this species and the need to protect its environment.

In its effort to protect the Jefferson salamander, the City of Mississauga constructed a fence to restrict public access and prevent use of unauthorized trails. Authorized trails are marked and maintained in order to provide the public with a cleaner and safer environment to enjoy Cawthra Woods.

We ask for your help in protecting wildlife and habitat in this environmentally sensitive area:

- stay on authorized trails
- avoid disturbing plant material
- keep dogs leashed and pick up after your pets
- **report damage and trespassing to the City's 24 hour Parks Watch Hotline at 905-615-4060 or to Peel Regional Police at 905-453-3311 (911 in an emergency)**

By adopting good land stewardship practices, we can work together to reduce our ecological footprint, and help create a healthy environment for our community and the Jefferson salamander.



For more information, call 3-1-1 (905-615-4311 from outside City limits)

Reference: Ontario Ministry of Natural Resources 2010. Jefferson Salamander Ontario Recovery Strategy Series. 29pp



Recovery Strategy for the Jefferson Salamander in Ontario

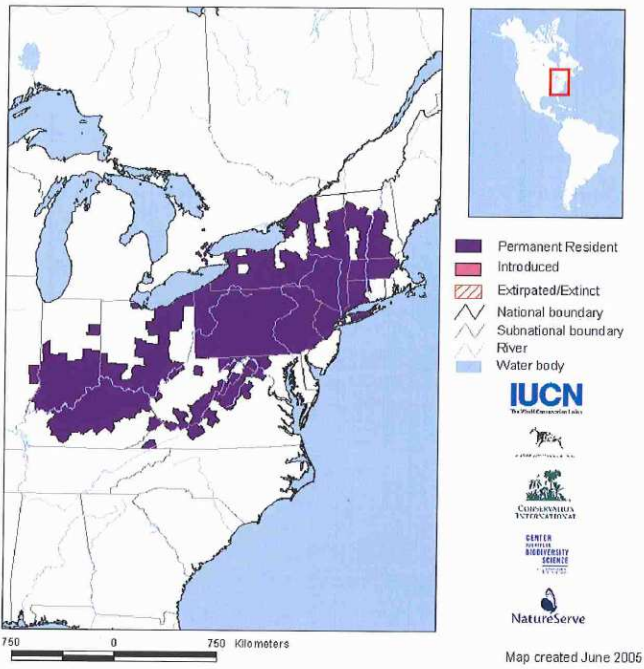


Figure 1. Global range for the Jefferson Salamander (NatureServe 2005)
Note: This map is based on Element Occurrence (EO) records, which represent specific locality data that are developed and maintained by individual provincial and state natural heritage programs. The Canadian distribution is shown as individual occurrences and the U.S. distribution is shown as the watersheds where the occurrences are found.

Recovery Strategy for the Jefferson Salamander in Ontario

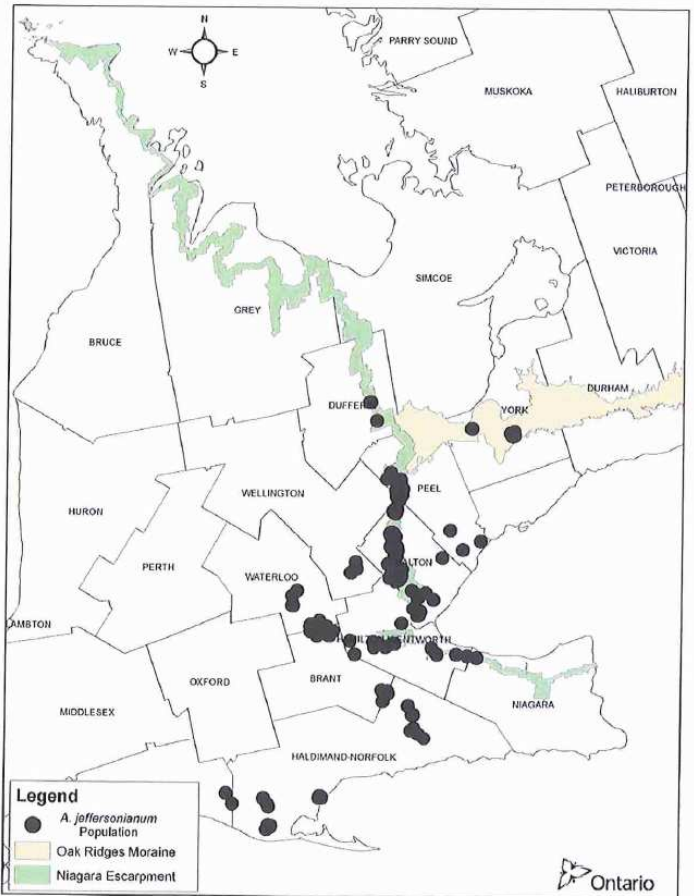


Figure 2. Documented locations of the Jefferson Salamander in Ontario