



Agenda

- 6:45 Registration**
- 7:00 Welcome**
- 7:05 Meeting Purpose and Format**
- 7:10 Presentation**
- 7:40 Questions/Discussion**
- 7:50 Workshop**
- 9:00 Next Steps in the Process**



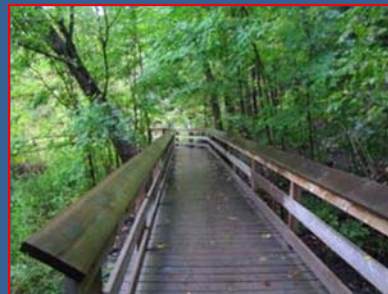


Credit River Parks Strategy

Community Meeting #3

Rivergrove Community Centre - Kaneff Room 1 & 2

September 14, 2011



SCHOLLEN & Company Inc

**Aquafor Beech ■ North-South Environmental Inc ■ Lura Consulting
GeoTerre ■ Urban Forest Innovations ■ Archaeological Services Inc
Poulos & Chung**



Purpose of the Meeting

Obtain feedback on key draft components of Credit River Parks Strategy:

**Vision, Principles & Goals
Alternative concepts for feature sites**

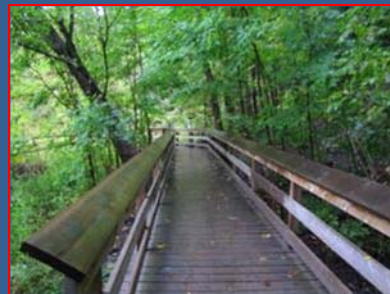
Agenda

- 6:45 Registration**
- 7:00 Welcome**
- 7:05 Meeting Purpose and Format**
- 7:10 Presentation**
- 7:40 Questions/Discussion**
- 7:50 Workshop**
- 9:00 Next Steps in the Process**



Credit River Parks Strategy

Study Process Progress Update



SCHOLLEN & Company Inc

**Aquafor Beech ■ North-South Environmental Inc ■ Lura Consulting
GeoTerre ■ Urban Forest Innovations ■ Archaeological Services Inc
Poulos & Chung**



Goal of the Study

Develop a sustainable, innovative and environmentally responsible master plan to guide the planning, development, conservation and management of a contiguous system of publicly owned and publicly accessible parkland and natural areas along the Credit River.





Study Area





Project Process – Status Update

Three Phases:

PHASE 1 - Background review

- Policy review - examine alignment with existing and proposed policies
- Engage broad range of stakeholders including First Nations

PHASE 2 - Development of Vision, Principles and Objectives

- **Development of park concepts: Recommendations for Feature Sites**
- Development of Interim Parks Strategy
- Phasing Plan - prepare phasing plan and capital works budgets in 5 year increments

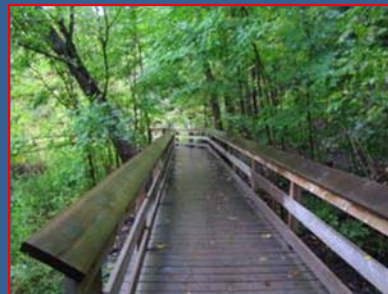
PHASE 3 - Finalization of Parks Strategy

- Preparation of Final Master Plan



Credit River Parks Strategy

Summary of Consultation Process



SCHOLLEN & Company Inc

**Aquafor Beech ■ North-South Environmental Inc ■ Lura Consulting
GeoTerre ■ Urban Forest Innovations ■ Archaeological Services Inc
Poulos & Chung**



Public Engagement Process – Summary & Findings

- 1. November 23, 2010: Community Meeting #1**
- 2. December 2010: Places and Spaces Outreach Program – Interviews with users**
- 3. January/February 2011: Web Survey (survey closed Feb. 22nd)**
- 4. February 2011: Submission/Review of the Background Document**
- 5. March/April 2011: Internal Focus Group Sessions (including: Parks Operations, Recreation, Heritage, Transportation and Works, etc.)**
- 6. March/April 2011: Stakeholder Interviews (including: Sierra Club, Bassmasters, Visual Arts Mississauga, Riverwood Conservancy, School Boards, etc.)**
- 7. April/May 2011: External Focus Group Sessions (including CVC, First Nations and MIRANET)**
- 8. June 2011: Review of Preliminary Master Plan and Operational Concept Plans for Feature Sites with city staff, stakeholders and the general public**
- 9. June 28, 2011: Community Meeting #2**
- 10. July 12, 2011: Bus Tour**





Summary of Public Input

Issues and concerns:

Use and Access

- Increased park access must be matched with appropriate management practices
- Issues with vandalism/alcohol and drug use/noise in some places
- Festivals and events can cause damage and create garbage
- Connection and linkage issues with existing trails (i.e. over the 401 & south of Streetsville Memorial Park)
- Should consult long-term residents and discuss how to foster respect for the private property

Facilities and Services

- New park infrastructure should be limited and not damage park ecology
- Need for more serviced, accessible washrooms



Summary of Public Input

Preferences and important park features:

Natural Settings

- A focus on preservation and protection of natural features
- Native plants (over formal gardens and landscaped areas)

Park Use

- Opportunities for passive recreation and experiencing nature
- Active recreation that does not impact the natural environment
- Long continuous trails for walking, hiking and biking
- Year round accessibility; more winter activities
- Facilities for shelter, shade and picnicking
- Opportunities for learning, interpretation, stewardship and volunteerism



Consultation Process

Key messages arising from consultations:

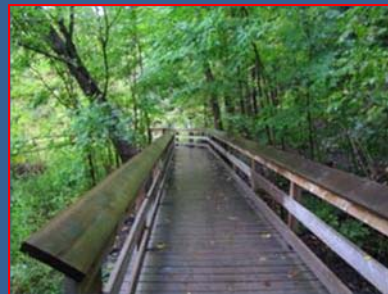
- Preservation and enhancement of natural heritage features and functions is of paramount concern
- Credit Valley should be positioned as the City's most important natural asset
- Uses within the valley should support natural heritage and should be primarily passive



Credit River Parks Strategy

Preliminary Master Plan

Vision/Objectives



SCHOLLEN & Company Inc

**Aquafor Beech ■ North-South Environmental Inc ■ Lura Consulting
GeoTerre ■ Urban Forest Innovations ■ Archaeological Services Inc
Poulos & Chung**



Draft Vision for the Credit River Parks Strategy

The Credit River Parks System is envisioned as the centerpiece of Mississauga's natural heritage green space system. It will support a diverse, self sustaining ecosystem and will afford appropriate opportunities for recreation, socialization and education while protecting, enhancing and celebrating the natural and cultural heritage of the Credit River. Stewardship will be a fundamental tenet of this strategy, requiring a cooperative commitment from stakeholders, both public and private, to promote the long term sustainability of this cherished natural and cultural heritage asset.



Draft Objectives – Natural Heritage

- Protect existing woodlot and wetland habitats and other important natural heritage features.
- Provide a continuous core habitat corridor throughout the valley system
- Restore degraded habitats and enhance and expand existing natural features.



Draft Objectives – Cultural Heritage

- Identify and protect cultural and archaeological resources and landscapes.
- Implement interpretive programs and elements to heighten public awareness of the heritage or the Credit River.





Draft Objectives – Community

- Integrate amenities and programs to promote environmental education, nature appreciation and stewardship.



- Provide opportunities for access to and experience of the Credit River.



- Where opportunities exist, seek to secure public access through private lands to achieve connectivity objectives.





Draft Objectives – Sustainability

- Link valleyland trails to local and regional bicycle and transit networks.
- Integrate low impact and sustainable design techniques in the implementation of recreational and support facilities.



Draft Objectives – Regulation

- Ensure conformity with federal, regional, local and conservation authority policies.

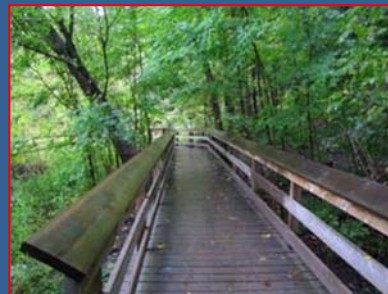




Credit River Parks Strategy

Preliminary Master Plan

Structure and Components



SCHOLLEN & Company Inc

**Aquafor Beech ■ North-South Environmental Inc ■ Lura Consulting
GeoTerre ■ Urban Forest Innovations ■ Archaeological Services Inc
Poulos & Chung**



Draft Strategy Structure

- **Preliminary Master Plan:**
 - **Overarching vision for the CRPS study area spanning decades**
 - **Alternative concept plans for “feature sites” within the overall CRPS study area.**
 - **Focus**
Strengthen ecological integrity and establish a connected forested natural corridor along the length of the Credit River Valley within the City of Mississauga.



Preliminary Master Plan Structure – Natural Corridor

- **Contiguous natural corridor along the Credit River from Hwy 407 to Lake Ontario**
- **Encompass existing natural features**
- **Focus on environmental restoration and enhancement**
- **Amenities support interpretation and offer visual and physical experiences of the river**
- **Use limited to hiking, angling, cross country skiing, nature appreciation and water-based recreation**





Preliminary Master Plan Structure – Transitional Beltlands

- Adjacent the edge of the Natural Corridor
- Support ecological functions of the Natural Corridor
- Establish appropriate gradation of landscape types from natural to managed
- Accommodate a broader range of activities
- Transition objectives to be achieved through policy direction and physical intervention





Preliminary Master Plan Structure – Linkages

- Connections to natural features beyond the study site
- Enhanced ecological connectivity throughout Greater Mississauga





Preliminary Master Plan Structure – Trails

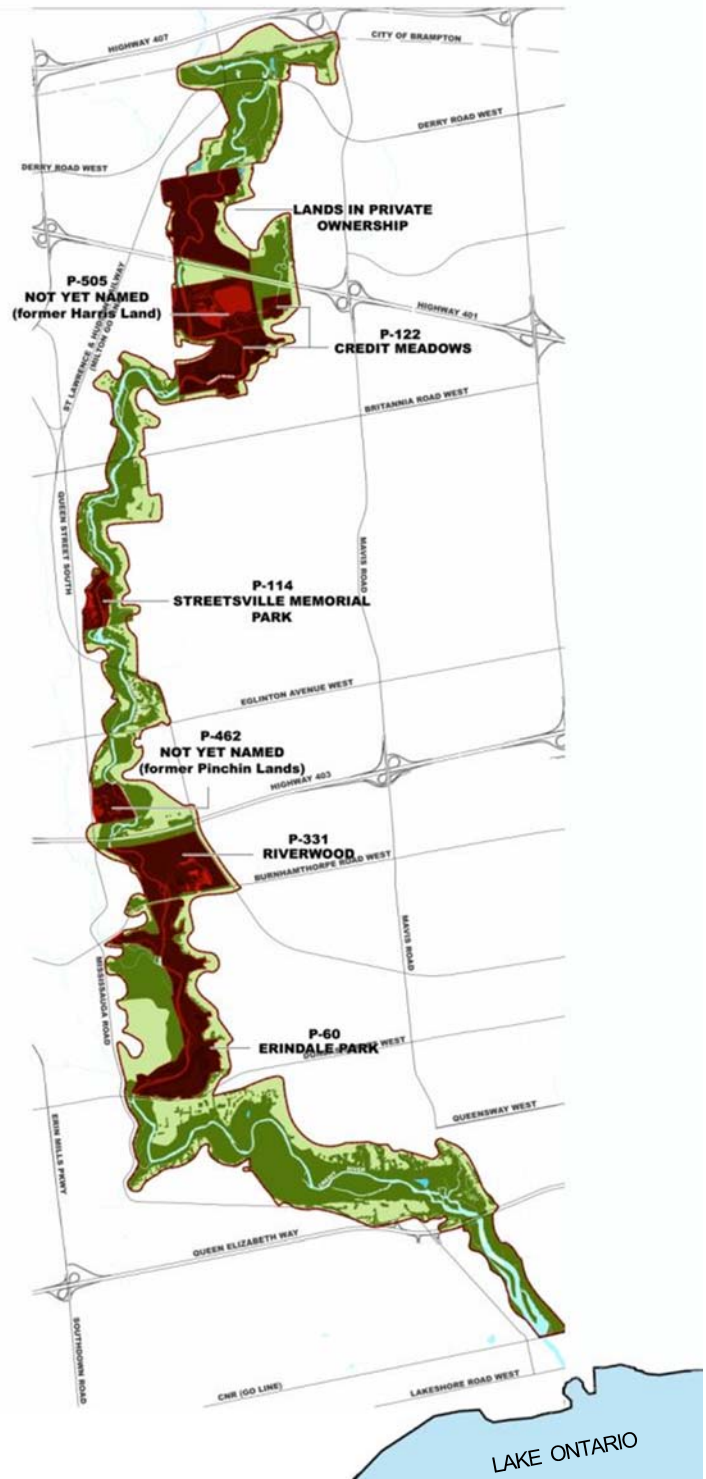
- **Continuous (north/south) Culham Trail along the length of the Credit River valley corridor**
- **Secondary trails connecting to adjacent neighbourhoods on trail system**
- **Trail heads at key locations / access points**





Preliminary Master Plan Structure – Feature Sites

- Seven feature sites
- Unique nodes bound together by Natural Corridor
- User experiences varied through recreation, interpretation and environment appreciation opportunities inherent to each feature site
- Each site offers a unique programmatic focus relating to natural heritage, cultural heritage and context within the corridor.



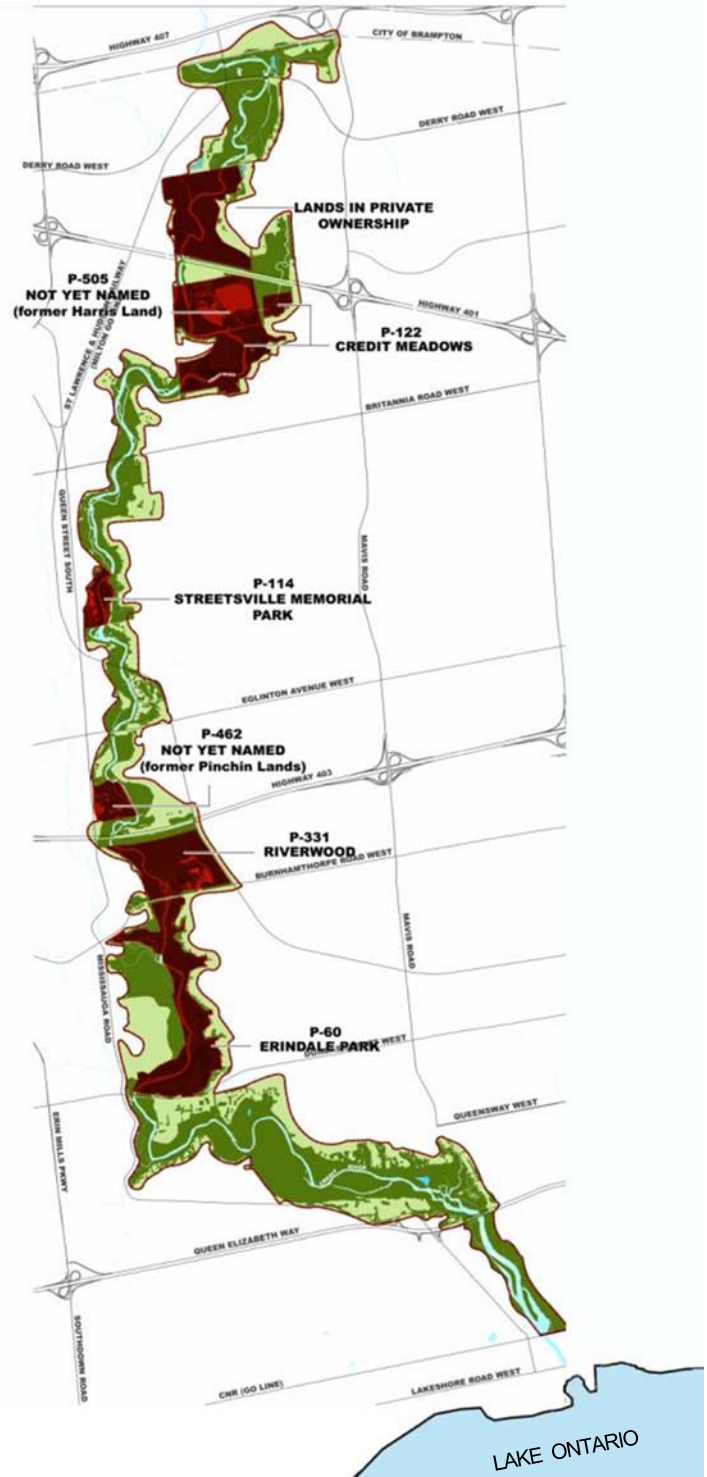


Feature Sites Concept Plans

- 3 options generated for each
- All options are consistent with the vision and objectives

However,

- Each option places a different degree of emphasis on natural, cultural and community objectives

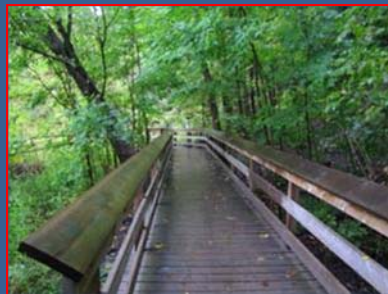




Credit River Parks Strategy

Preliminary Master Plan

Optional Concept Plans for Feature Sites



SCHOLLEN & Company Inc

**Aquafor Beech ■ North-South Environmental Inc ■ Lura Consulting
GeoTerre ■ Urban Forest Innovations ■ Archaeological Services Inc
Poulos & Chung**



*** Note:**

There is no public access to this site at this time

Feature Site: Land in Private Ownership (Option A)

Theme: Native plant propagation and nursery, arboricultural education, administration and operations centre

Features: Native plant market
Support local restoration efforts
Improvements to the farm access route
Canoe and angling





*** Note:**

There is no public access to this site at this time

Feature Site: Land in Private Ownership (Option B)

Theme: Native plant propagation and nursery, arboricultural education, administration and operations centre

Features: Native plant market
Wetland plant propagation
Improvements to the farm access route
More direct access to the existing trail
Canoe and angling





Feature Site: Former Harris Lands (Option A)

Theme: Agricultural heritage of Mississauga and urban agriculture and natural heritage restoration

Features: Urban Farm office
Reforestation
Youth volunteer/training centre
Urban agriculture demonstration and research centre

Note: There is no public access to this site at this time





Feature Site: Former Harris Lands (Option B)

Theme: Agricultural heritage of Mississauga, urban agriculture, alternative energy demonstration, permaculture and organic food production

Features: Urban farm office/demonstration and research centre
 Demonstration organic agriculture sites
 Sugar bush and maple syrup
 Apiary and pollinator meadow
 Compost /organic fertilizer production
 Garden market
 Youth volunteer/training centre

Note: There is no public access to this site at this time





Feature Site: Former Harris Lands (Option C)

Theme: Agricultural heritage of Mississauga, organic agriculture, urban farm and community garden

Features: Urban Farm office
 Large scale agriculture
 Demonstration organic agriculture
 Agricultural education facilities
 Compost /organic fertilizer production
 Community garden
 Youth volunteer/training centre
 Reforestation

Note: There is no public access to this site at this time





Feature Site: Credit Meadows (Option A)

Theme: Natural heritage restoration and enhancement and passive recreation

Features: Reforestation
Passive recreation
Angling
Parking retrofit with LID initiatives



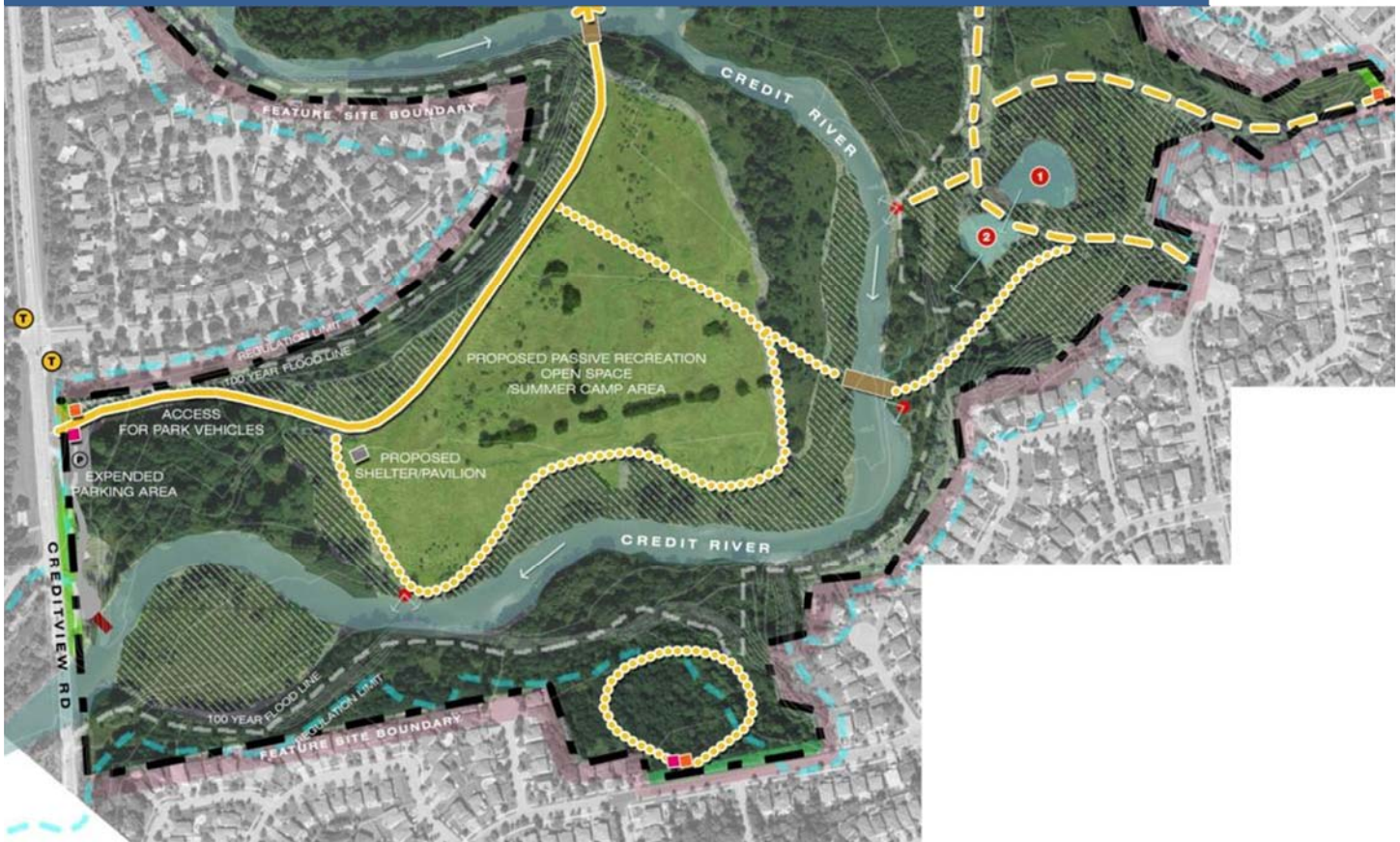


Feature Site: Credit Meadows (Option B)

Theme: Natural heritage restoration and enhancement, passive recreation and neighbourhood link

- Features:**
- Reforestation
 - Passive recreation
 - Bird nesting
 - Angling
 - Canoe launch
 - Lookouts
 - Parking retrofit with LID initiatives





Feature Site: Credit Meadows (Option C)

Theme: Natural heritage restoration and enhancement, passive recreation, open space and neighbourhood link

Features: Reforestation
Open space (passive recreation/summer camp area)
Angling
Lookouts
Canoe launch
Parking retrofit with LID initiatives





Feature Site: Streetsville Memorial Park (Option A)

Theme: Cultural heritage interpretation and environmental restoration

Features: Reforestation
Passive recreation
Environmental & Cultural Heritage education
Riverbank restoration





Feature Site: Streetsville Memorial Park (Option B)

Theme: Cultural heritage education and interpretation with linkages to historic Streetsville

Features: Environmental restoration
Passive recreation
Environmental & Cultural Heritage education
Floodplain wetland complex
Floodplain meadow complex
Riverbank restoration
Angling opportunities
Canoe launch





Feature Site: Streetsville Memorial Park (Option C)

Theme: Cultural heritage education and interpretation, limited active recreation

Features: Environmental restoration
Active and passive recreation
Picnicking
Environmental & Cultural Heritage education
Riverbank restoration





Feature Site: Former Pinchin Lands (Option A)

Theme: Cultural heritage interpretation and valley reforestation

Features: Heritage Mississauga headquarters
Heritage museum and artifact storage
Demonstration orchard site
Extensive reforestation





Feature Site: Former Pinchin Lands (Option B)

Theme: Organic fruit production, heirloom species, cultural heritage interpretation

Features: Heritage Mississauga headquarters
Heritage museum and artifact storage
Heirloom orchard demonstration site



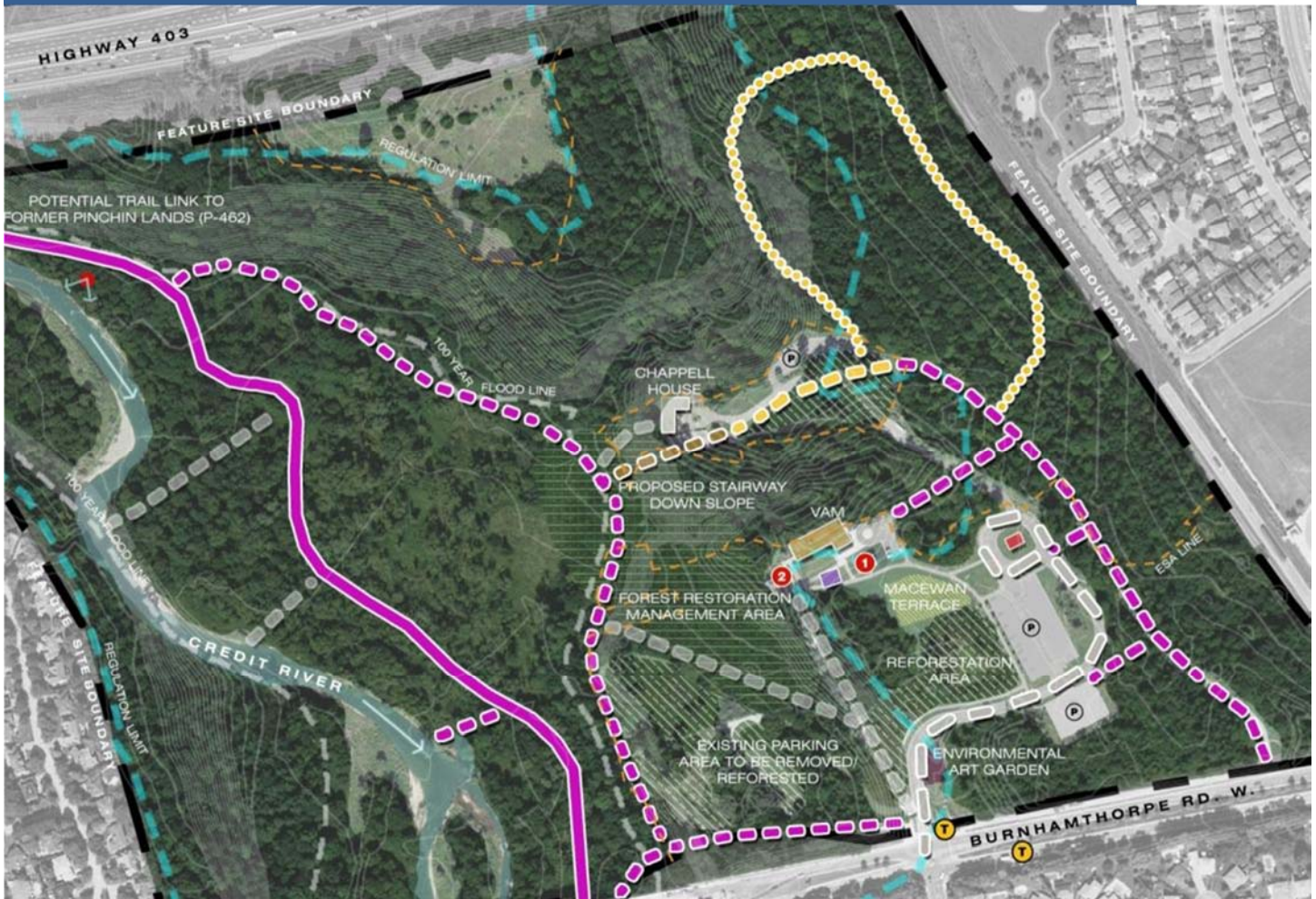


Feature Site: Former Pinchin Lands (Option C)

Theme: Organic fruit production and cultural heritage interpretation

Features: Heritage Mississauga headquarters
 Heritage museum and artifact storage
 Orchard
 Orchard operations classroom and market



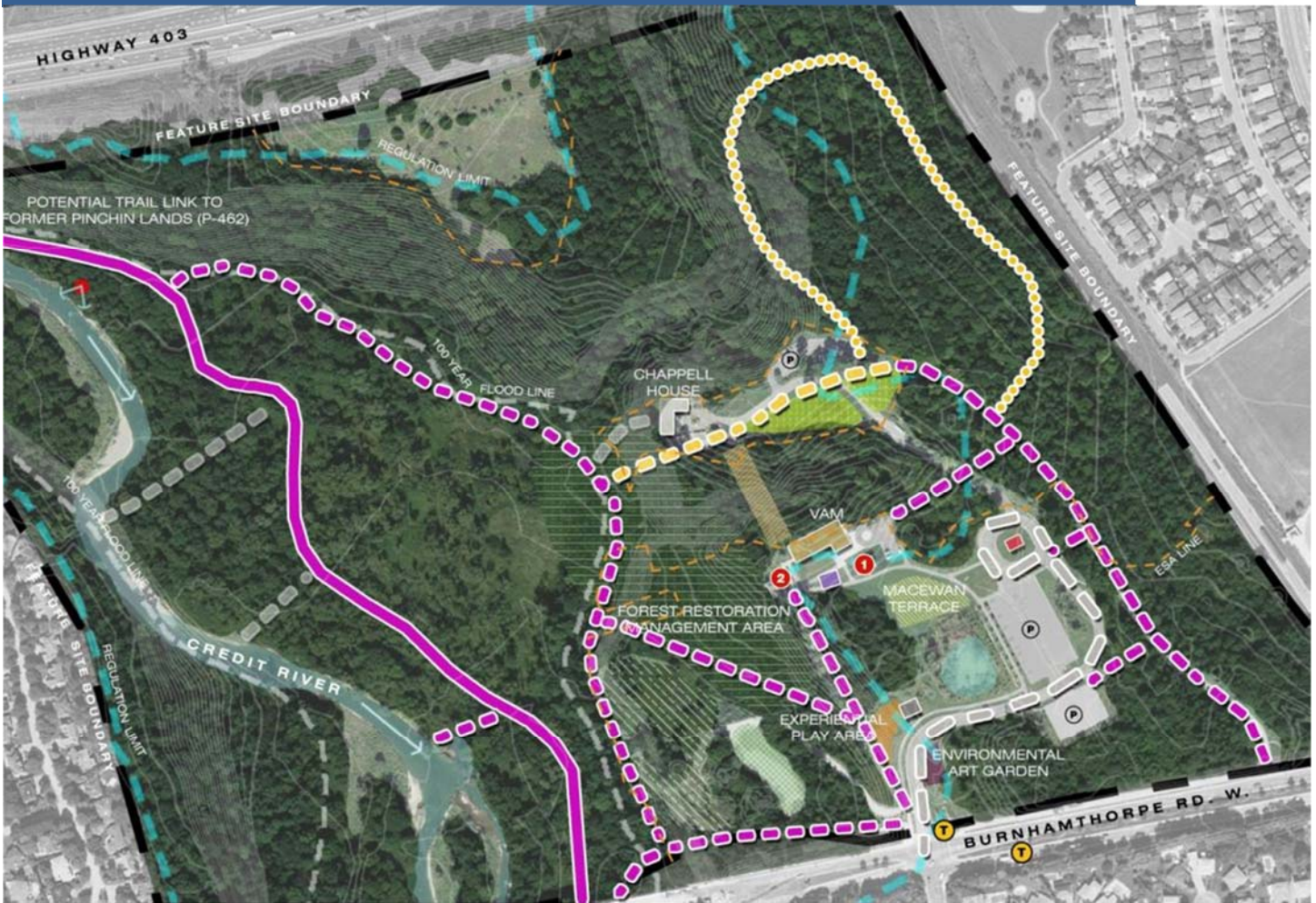


Feature Site: Riverwood Park (Option A)

Theme: Centre for arts and environmental education, environmental restoration

Features: Visual Arts Mississauga
Riverwood Conservancy
Improved transit access
Defined and consolidated trail system
Understorey and slope restoration
Reforestation



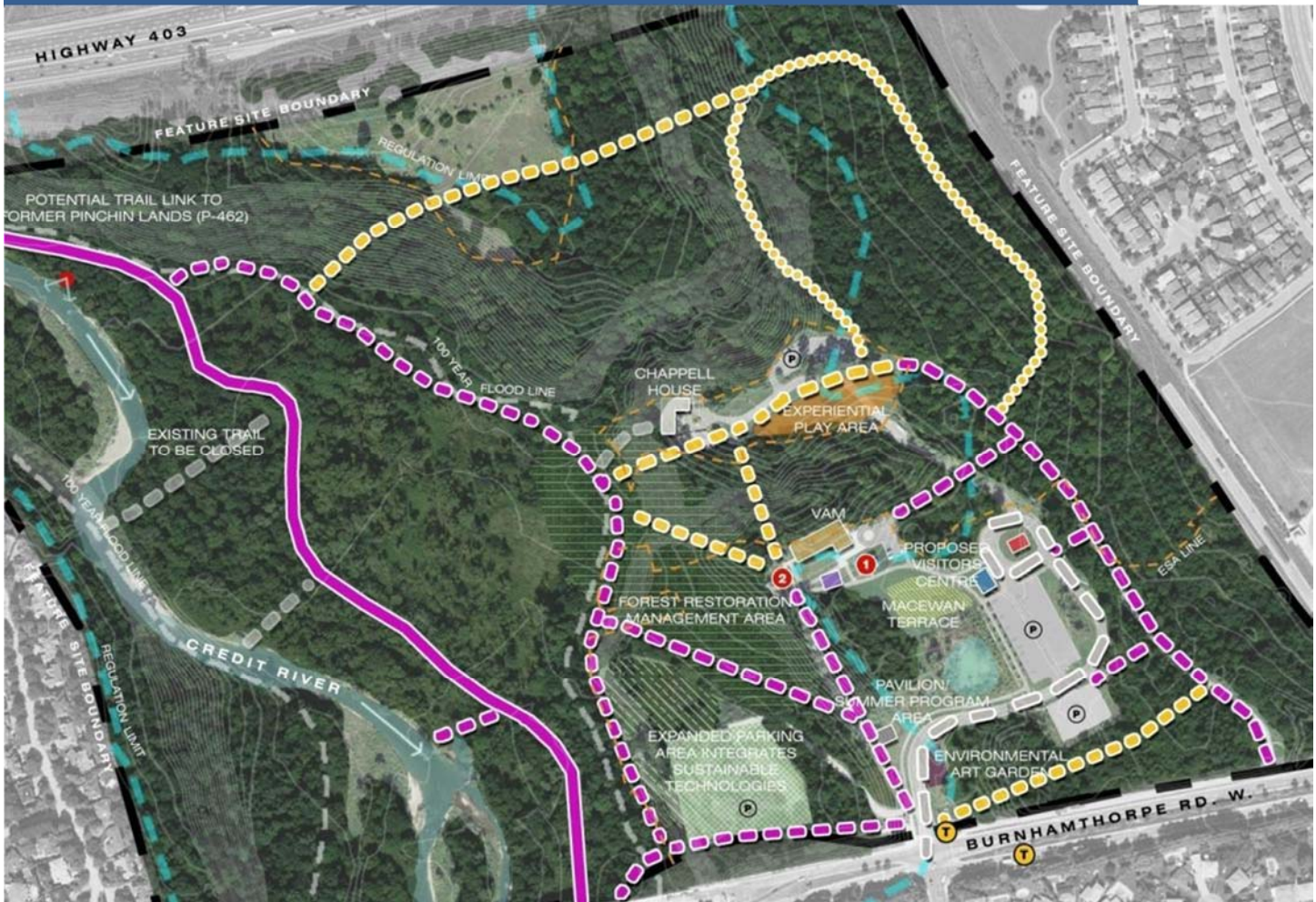


Feature Site: Riverwood Park (Option B)

Theme: Centre for arts and environmental education

- Features:**
- Interpretation node
 - Visual Arts Mississauga
 - Riverwood Conservancy
 - Art-in-the-park & Visual Arts events
 - Native/sculpture garden
 - Experiential play area
 - Expanded parking
 - Improved transit access
 - Defined and consolidated trail system
 - Understorey and slope restoration





Feature Site: Riverwood Park (Option C)

Theme: Centre for arts and environmental education

- Features:**
- Interpretation node
 - Visual Arts Mississauga
 - Riverwood Conservancy
 - Art-in-the-park & Visual Arts events
 - Expanded parking retrofit with LID technologies
 - Experiential play and summer program opportunities
 - Improved transit access
 - Defined and consolidated trail system
 - Understorey and slope restoration
 - Reforestation

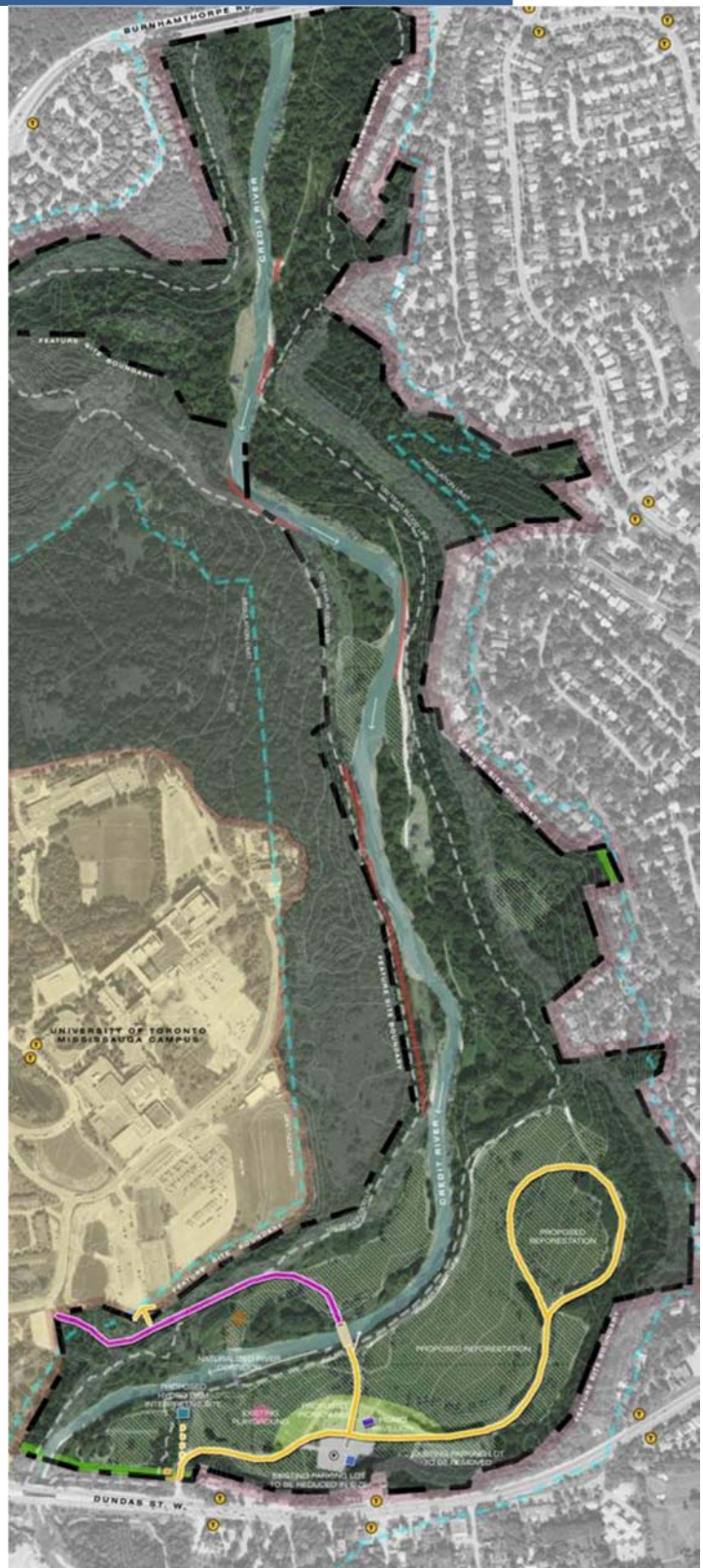




Feature Site: Erindale Park (Option A)

Theme: Natural heritage restoration and passive recreation

Features: Passive recreation
Picnicking
Angling
Washrooms
Reforestation
Reduced parking

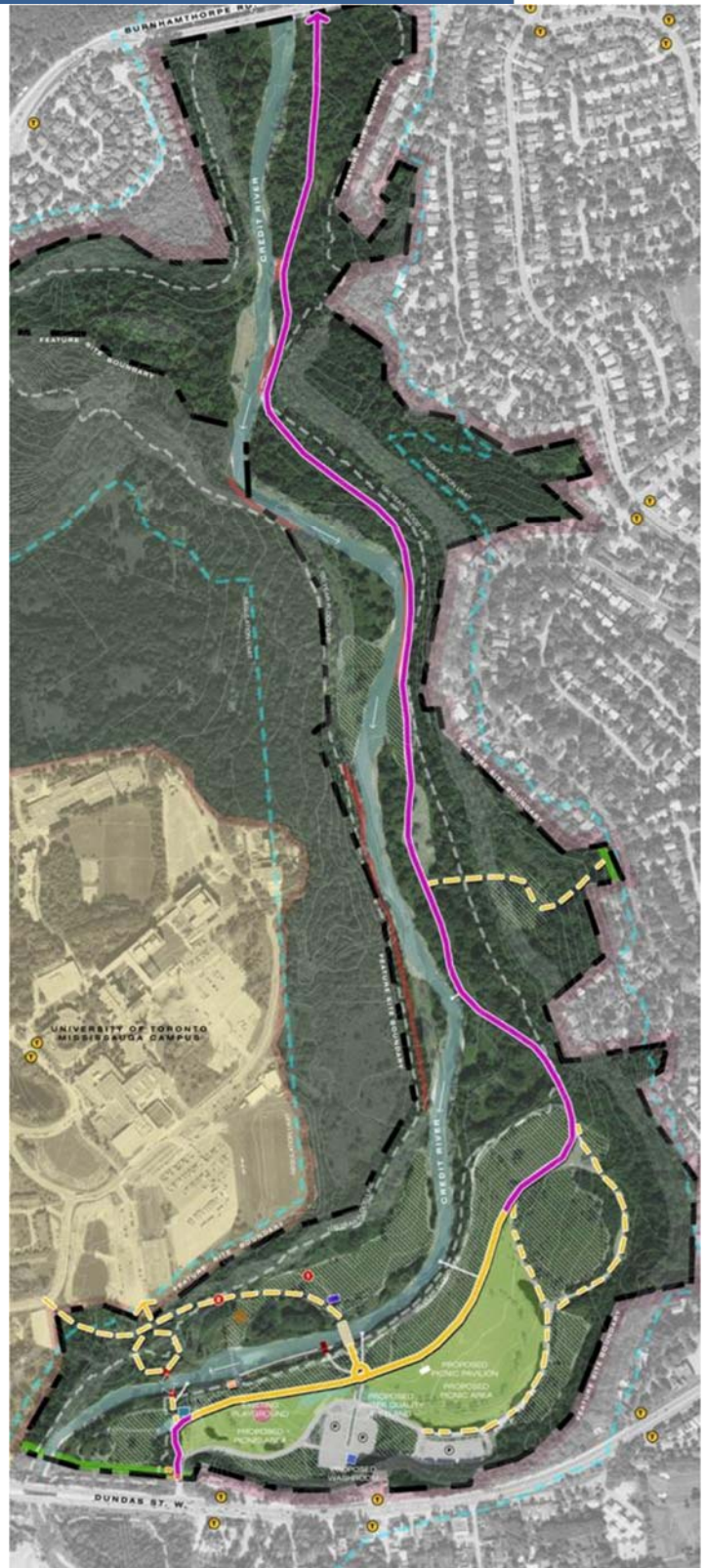




Feature Site: Erindale Park (Option B)

Theme: Social and cultural events, river restoration and valley reforestation

Features: Active and passive recreation
Picnicking
Angling
Washrooms
Parking retrofit to include LID initiatives

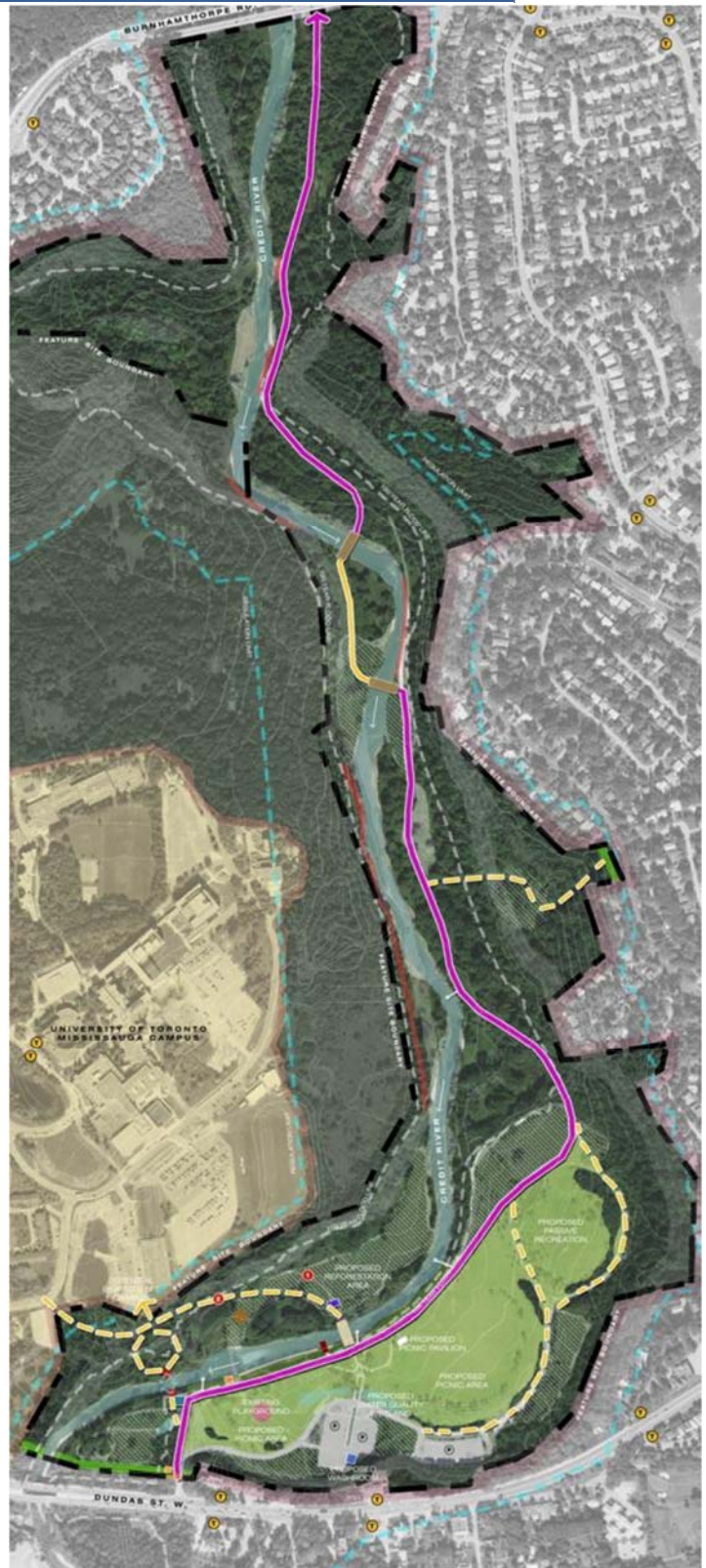




Feature Site: Erindale Park (Option C)

Theme: Social and cultural events / active recreation

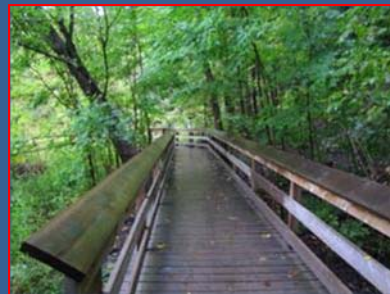
Features: Active and passive recreation
Picnicking
Angling
Washrooms
Parking retrofit including LID initiatives
Modified trail alignment in the north end





Credit River Parks Strategy

QUESTIONS AND ANSWERS



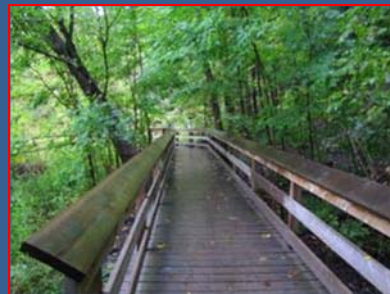
SCHOLLEN & Company Inc

**Aquafor Beech ■ North-South Environmental Inc ■ Lura Consulting
GeoTerre ■ Urban Forest Innovations ■ Archaeological Services Inc
Poulos & Chung**



Credit River Parks Strategy

WORKSHOP



SCHOLLEN & Company Inc

**Aquafor Beech ■ North-South Environmental Inc ■ Lura Consulting
GeoTerre ■ Urban Forest Innovations ■ Archaeological Services Inc
Poulos & Chung**



Workshop Instructions

- 8 feedback stations
- Use post-it notes and comment forms to provide feedback
 - What do you like most
 - What would you change
- Other ways to comment
- Online



Website

www.mississauga.ca/creditriversstrategy



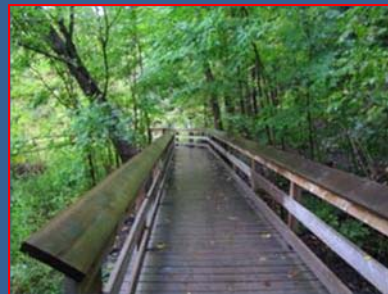


Credit River Parks Strategy

Community Meeting #3

Rivergrove Community Centre - Kaneff Room 1 & 2

September 14, 2011



SCHOLLEN & Company Inc

**Aquafor Beech ■ North-South Environmental Inc ■ Lura Consulting
GeoTerre ■ Urban Forest Innovations ■ Archaeological Services Inc
Poulos & Chung**