



Credit River Parks Strategy

Stakeholder and Community Meeting No. 1

Tower Garden Café, Mississauga Civic Centre

23 November 2010



SCHOLLEN & Company Inc

**Aquafor Beech ■ North-South Environmental Inc ■ Lura Consulting
GeoTerre ■ Urban Forest Innovations ■ Archaeological Services Inc
Poulos & Chung**



Meeting Agenda

- 6:30 Registration**
- 7:00 Open House - View Maps & Panels**
- 7:30 Introductions - Laura Piette, Director, Community Services**
- 7:35 Presentation - Mark Schollen, Principal, Schollen & Company**
- 8:00 Questions and Answers - Jim Faught, Director, Lura Consulting**
- 8:15 Workshop - Public Input**
- 8:55 Next Steps - Mark Howard, Project Lead, Credit River Parks Strategy**
- 9:00 Adjourn**





Presentation Overview

1. Introduction to Project Team
2. Study Process and Timeline
3. Introduction to the Project – Study Area and Context
4. Study Area - Feature Sites
5. Review of Policy / Background Studies
6. Inventory and Landscape Assessment
7. Support Study – Cultural & Archaeological Heritage
8. Ecological Inventory and Assessment
9. Introduction to the Public Engagement Process
10. Next Steps





1. Introduction to Study Team – Lead Team

Schollen & Company Inc.	Project Management, Landscape Architecture, Park and Trail Master Planning and Design, Parks Management and Implementation Plans
North-South Environmental Inc.	Environmental Impact Analysis, Natural Resource and Species At Risk Inventory & Assessment, Restoration Ecology, Ecological Management Plans Management and Restoration
LURA Consulting	Community Engagement Strategy
Aquafor Beech	Water Resources Engineering, Flood Mitigation, Water Quality



1. Introduction to Study Team – Advisory Team

Archaeological Services Inc

Archaeological & Cultural Heritage Assessment, First Nations Consultation

Urban Forest Innovations Inc.

Arboricultural Services, Tree Assessment

Geoterre Ltd

Geotechnical and Soils Analyses

Poulos & Chung Ltd

Transportation planning and assessment



1. Introduction to Study Team - Core Team

- **REGION OF PEEL**

- Representatives from Planning Policy and Research Division

- **CITY OF MISSISSAUGA**

Representatives from eight divisions within three departments including:

- Community Services Department
- Corporate Services Department
- Transportation and Works Department
- Planning and Building Department

- **CREDIT VALLEY CONSERVATION**

Representatives are included from the following departments:

- Water Resources
- Lands & Natural Heritage
- Restoration & Stewardship



1. Stakeholders

- Canadian Environmental Assessment Agency
- Department of Fisheries and Oceans (DFO)
- Ministry of the Environment (MOE)
- Ministry of Natural Resources (MNR)
- Ministry of Transportation (MTO)
- Bell Canada
- Canadian National Railway (CNR)
- Canadian Pacific Railway (CPR) & S.L&HR
- Hydro One Networks
- Enbridge Consumers Gas
- Enbridge Pipelines Inc.
- Sarnia Products Pipelines (Imperial Oil)
- Sun-Canadian Pipe Line Company Limited
- Trans-Northern Pipelines Inc.
- Mississauga Golf and Country Club
- Credit Valley Golf and Country Club
- Mississauga Bicycle Racing Club
- Community Association, Erindale Village Ass
- Meadowvale Village Community Association, Mississauga - Kane Road Ratepayer's
- Credit Valley Marathon Club
- Southdown Striders
- South Peel Naturalists Club
- University of Toronto Mississauga (UTM)
- Peel District School Board
- Dufferin-Peel Catholic District School Board
- Credit River Alliance (CRA)
- Credit River Angler's Association
- Eco-Source Mississauga
- Halton-Peel Woodlands and Wildlife Stewardship Council (HPWWS)
- Mississauga Bassmasters
- Ontario Archaeological Society
- Ontario Nature
- Ontario Trails Council
- Peel Environmental Network
- The Riverwood Conservancy
- Sierra Club of Peel
- Trees Ontario
- Credit Reserve Association Credit Valley Meadows Residents Association, Erindale-Woodlands Association Mississauga Oakridge Ratepayer's



2. Study Process and Timeline Update

Three Phases:

- PHASE 1 -
 - Background review
 - Policy review - examine alignment with existing and proposed policies
 - Engage broad range of stakeholders including First Nations

- PHASE 2 -
 - Development of Vision, Principles and Objectives
 - Development of park concepts - recommendations and budgets for Feature Sites
 - Development of Interim Parks Strategy
 - Phasing Plan - prepare phasing plan in 5 year increments

- PHASE 3 -
 - Finalization of Parks Strategy
 - Preparation of Final Master Plan



3. Purpose of the Meeting

To introduce the Credit River Parks Strategy planning process to stakeholders and public participants and seek early feed-back on issues, objectives and outcomes for this project

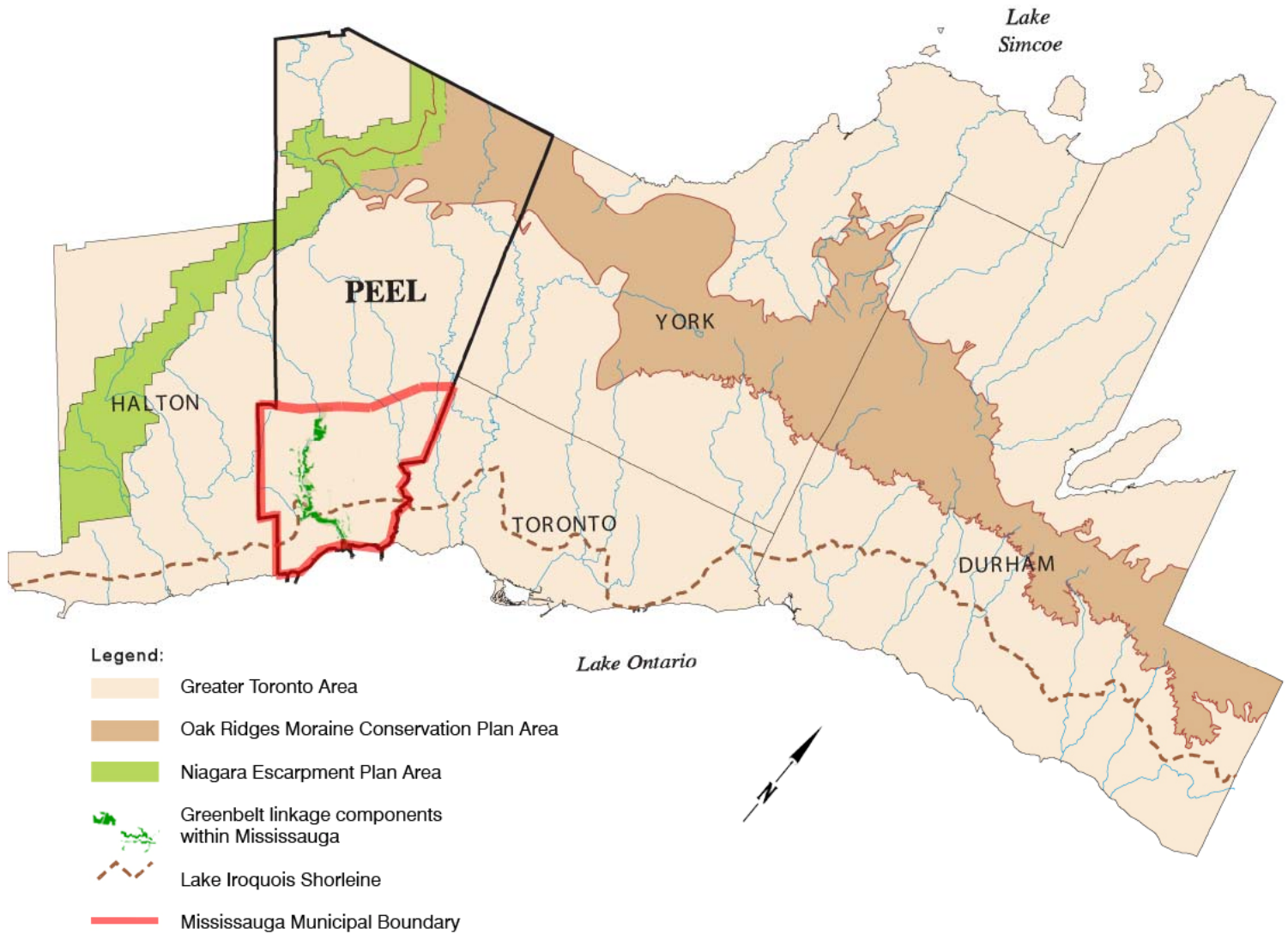


3. Goal of the Study

Develop a sustainable, innovative and environmentally responsible master plan to guide the planning, development, conservation and management of a contiguous system of publicly owned and publicly accessible parkland and natural areas along the Credit River.



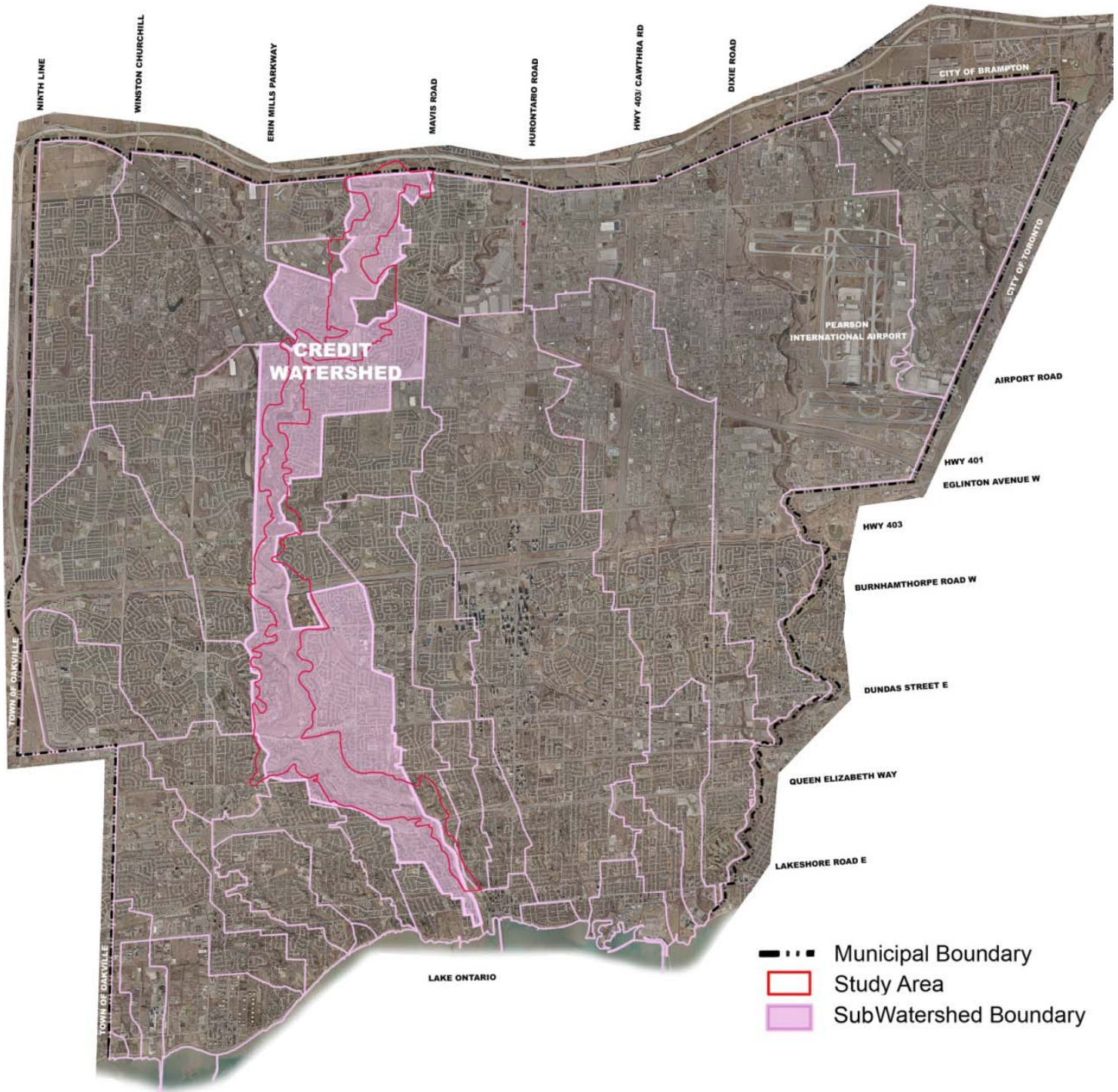
3. Study Area – Regional Context



**taken from Peel Official Plan Figure 1*



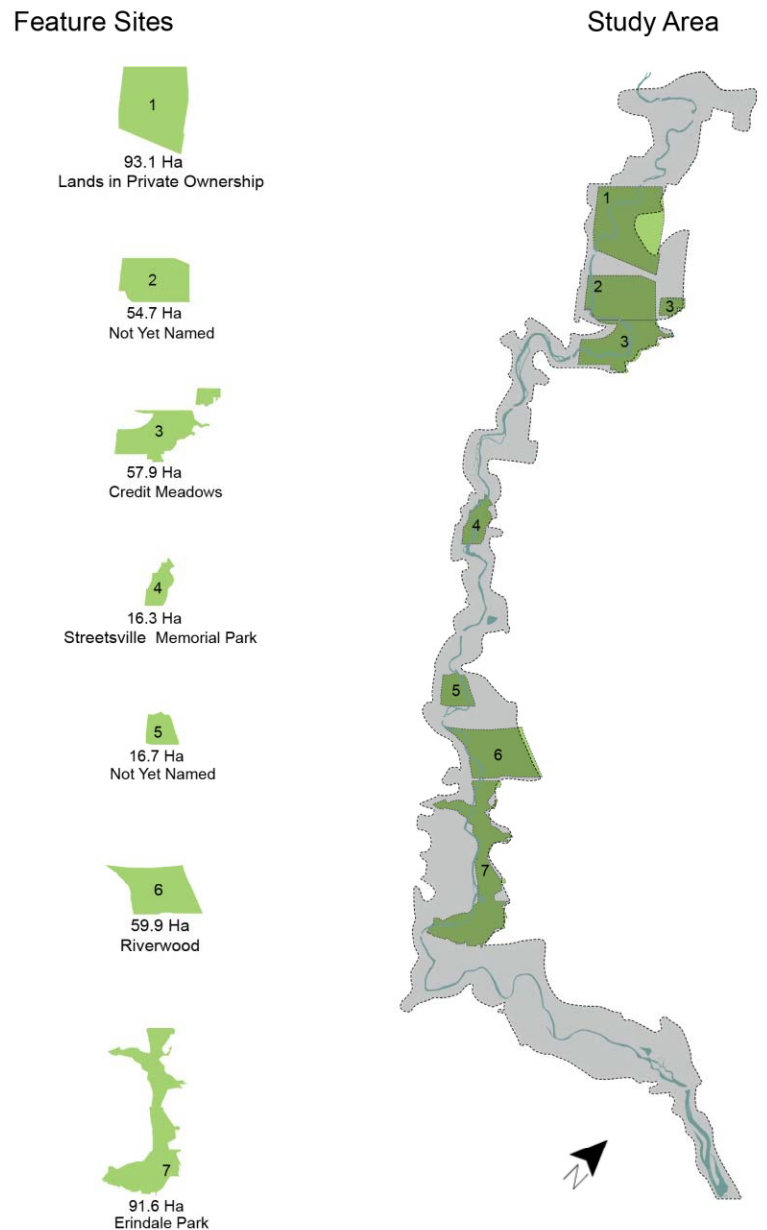
3. Study Area





3. Study Area

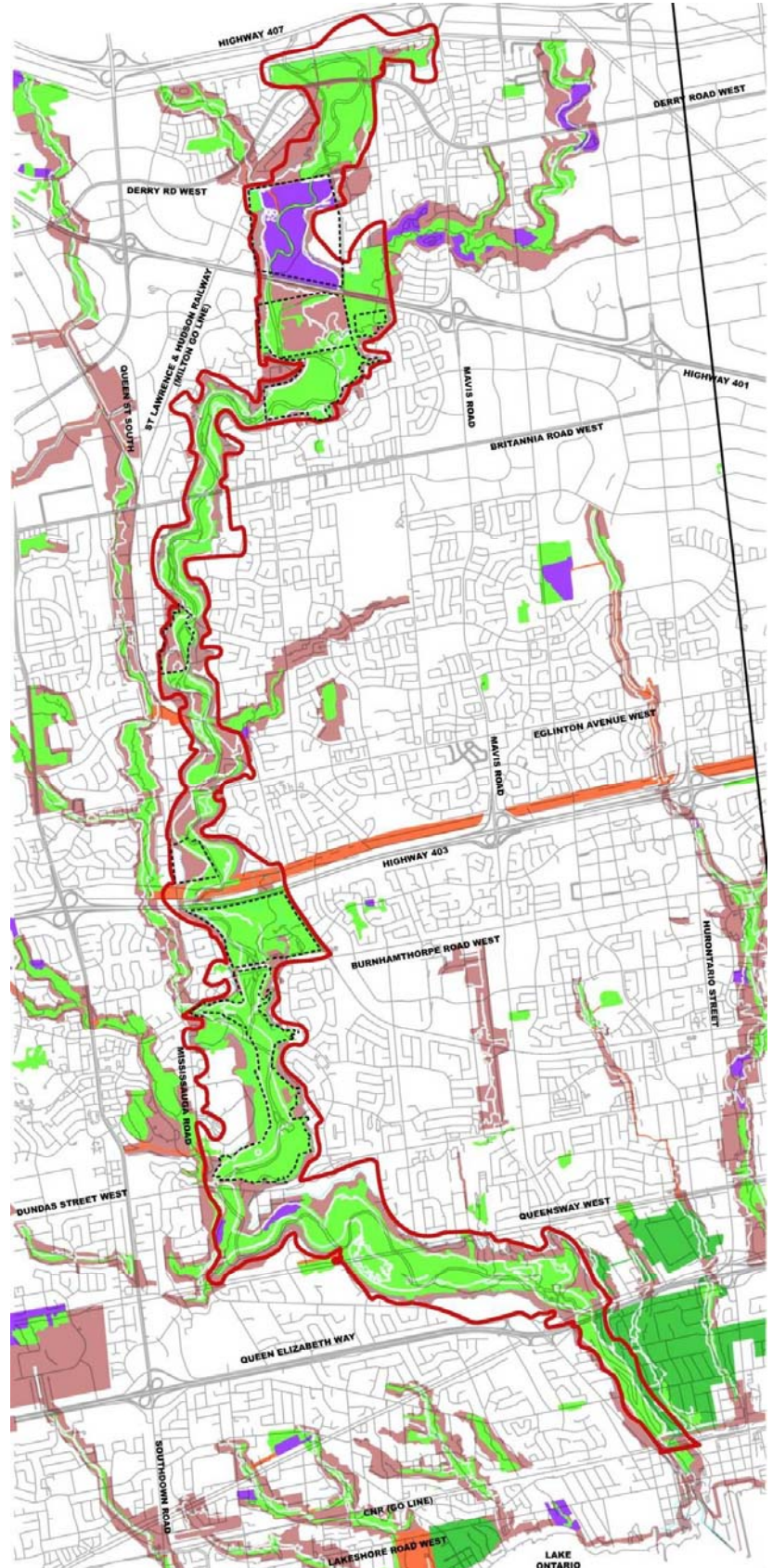
- The Study Area is composed of 17 contiguous natural areas forming the Natural Area System
- The Credit Valley forms the northern limit of the Carolinian Forest Zone
- Major migratory corridor from Lake Ontario
- Credit River meanders over 90km from headwaters at Orangeville and Alton to Lake Ontario at Port Credit extending 27 kilometers within Mississauga
- Study Area includes open space of which 32% is directly adjacent the river
- This accounts for over 20% of Mississauga's parkland
- Seven Feature Sites account for 392ha (26% of Study Area)





3. Study Context

Public Open Space Management



LAND MANAGEMENT LEGEND

- Credit Valley Conservation
- Natural Area
- Special Management Areas
- Linkages
- Residential Woodlands





3. Study Context

Potential Opportunities/ Barriers to Connectivity

- Pipelines
- Easements
- Right of Ways
- Hydro Corridors

- ENBRIDGE
- IMPERIAL OIL
- PRAXIR
- SUN CANADIAN
- TRANS CANADA
- TRANS NORTHERN
- UNION GAS
- Railways
- Existing Roads
- Existing Bridges
- Hydro Corridor/Poles/Transformers





3. Study Context

Canopy Coverage

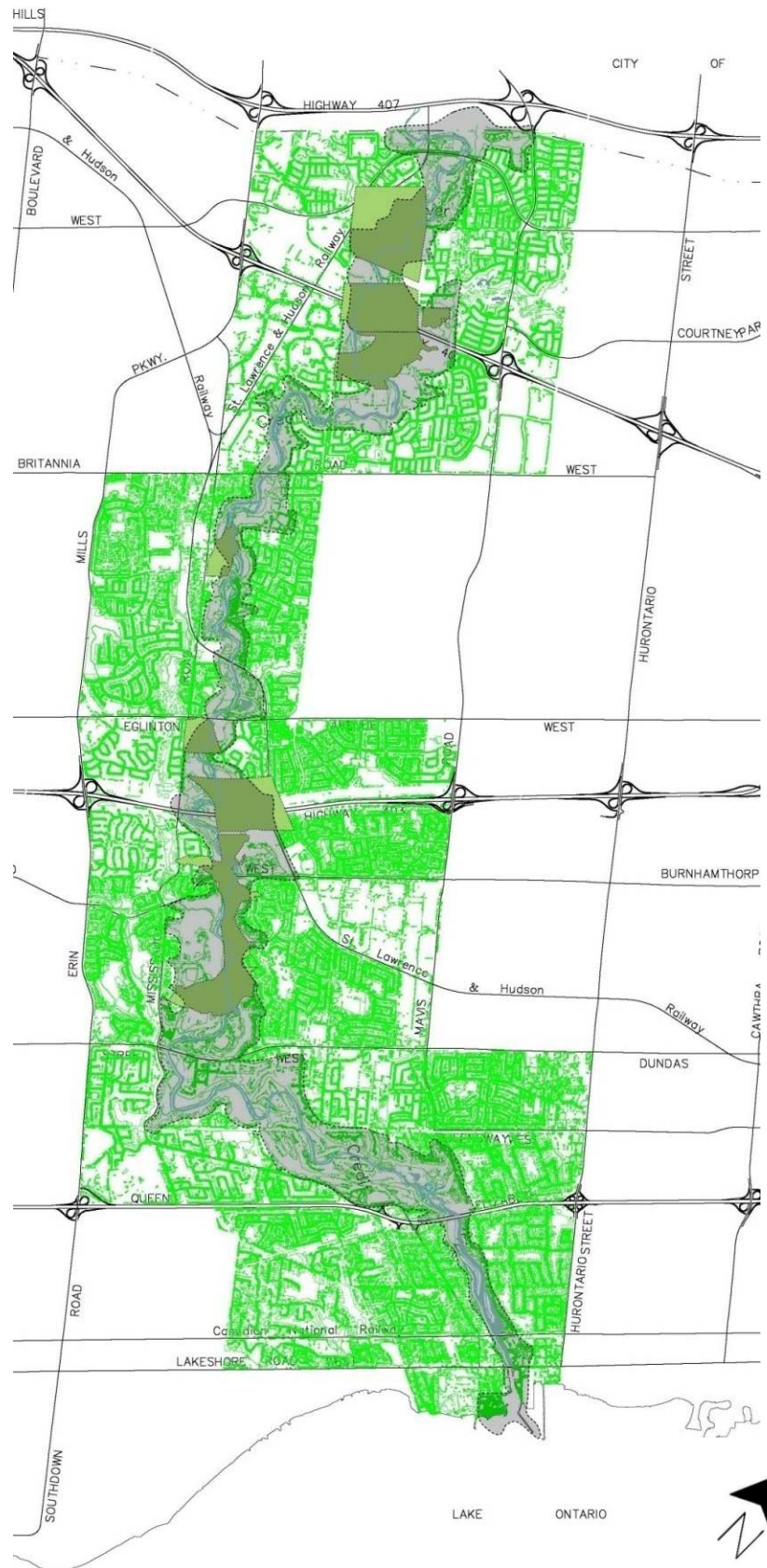
- 548ha (38%) of Study Area is Forested
- 176ha (45%) of Feature Sites are Forested



Trees and Hedges



Wooded Areas





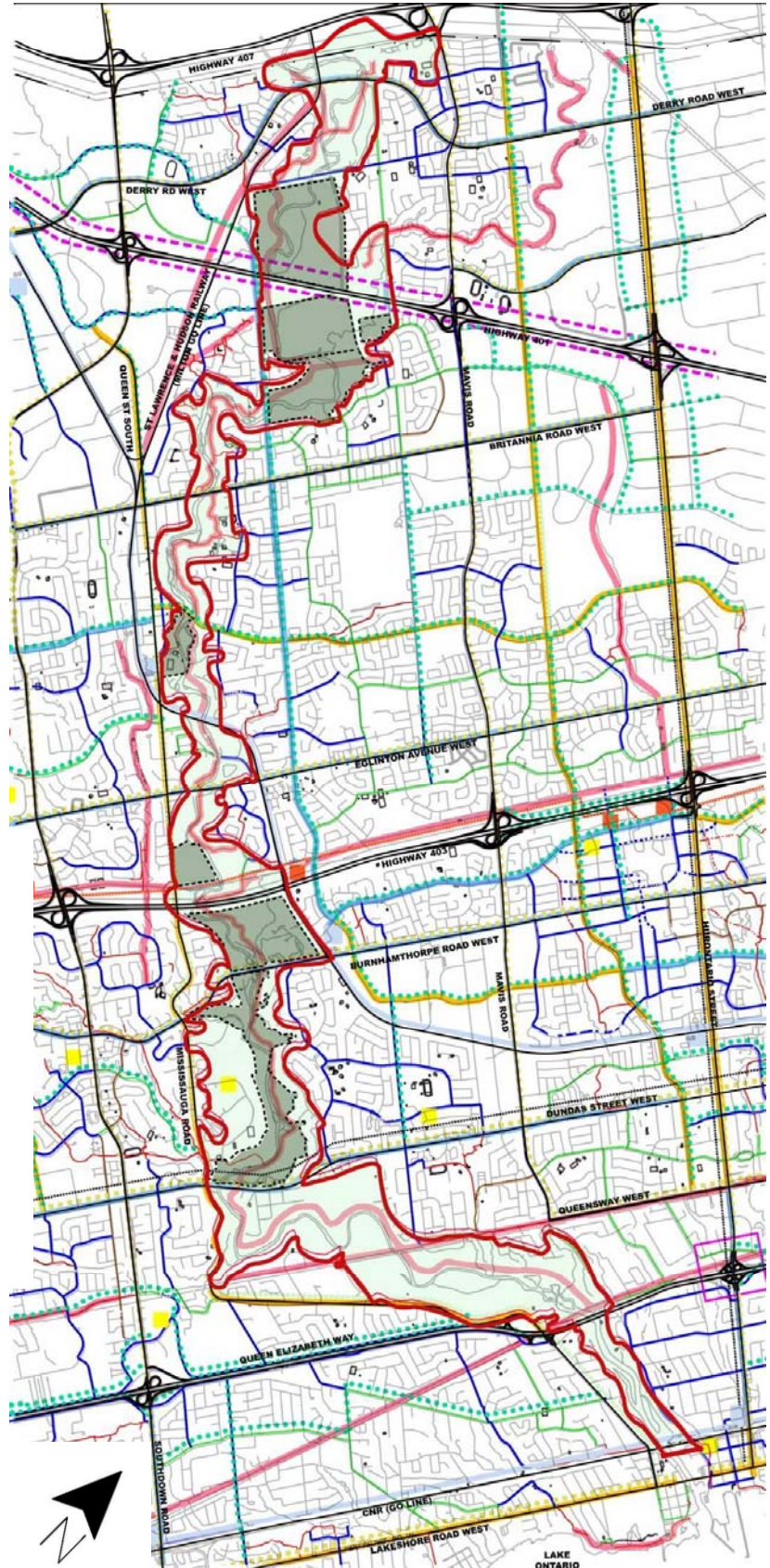
3. Study Context

Circulation – Transit, Trails and Cycle Route Network

- Existing and Proposed Transit
- On-Off Road Trails
- Existing and Proposed Cycle Routes

TRAILS AND BIKE ROUTES LEGEND

- Ex. On-Road Shared Use Lanes
- Ex. On-Road Bike Lanes Routes
- Ex. Boulevard Trails
- Ex. Off-Road Multi-use Trails
- Proposed Secondary Routes
- Proposed Primary Off-Road Routes
- Proposed Primary Boulevard Routes
- Proposed Primary On-Road Routes
- - - Proposed DT21 Master Plan–Secondary Route
- - - Proposed DT21 Master Plan Off-Road Multi-use Trails



* Adapted from Map 5-2 from Mississauga Cycling Route Network, Aug 2010



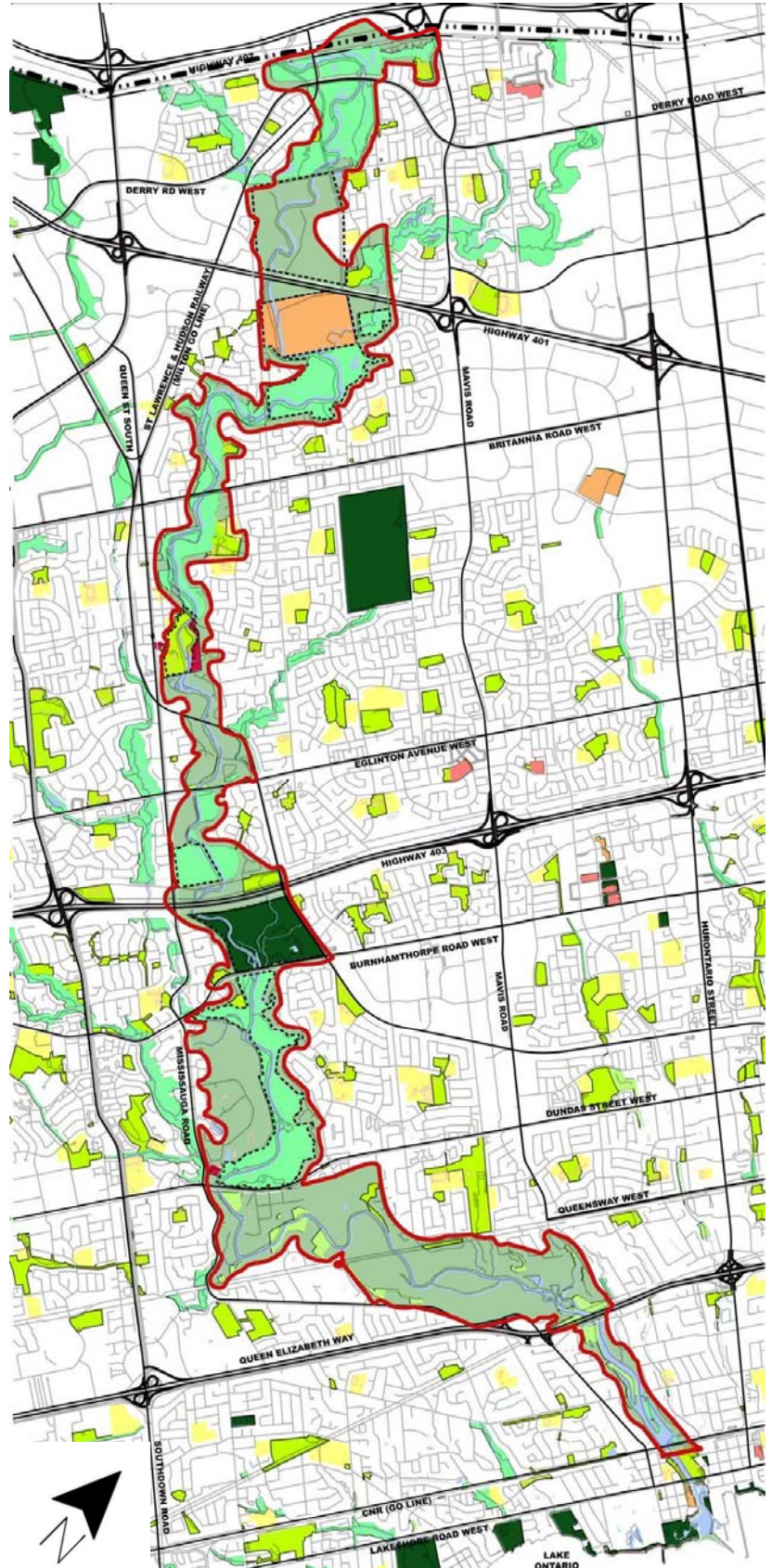
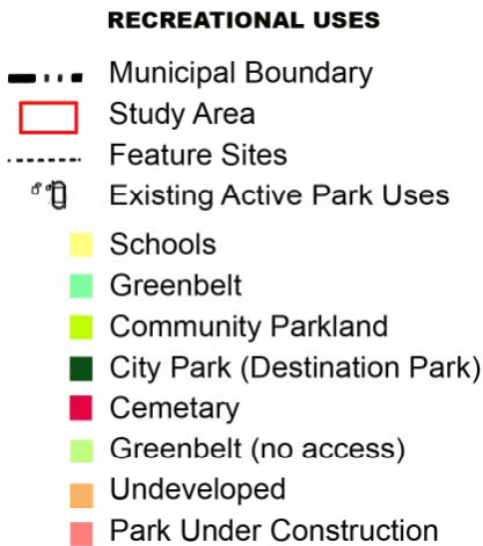


3. Study Context

Recreation

Within Study Area:

- 10ha Schools
- 73 ha Undeveloped
- 5 ha Cemetery
- 120 Parkland
- 290ha Greenbelt



* Adapted from Figure 1 Parks and Open Space, Future Directions

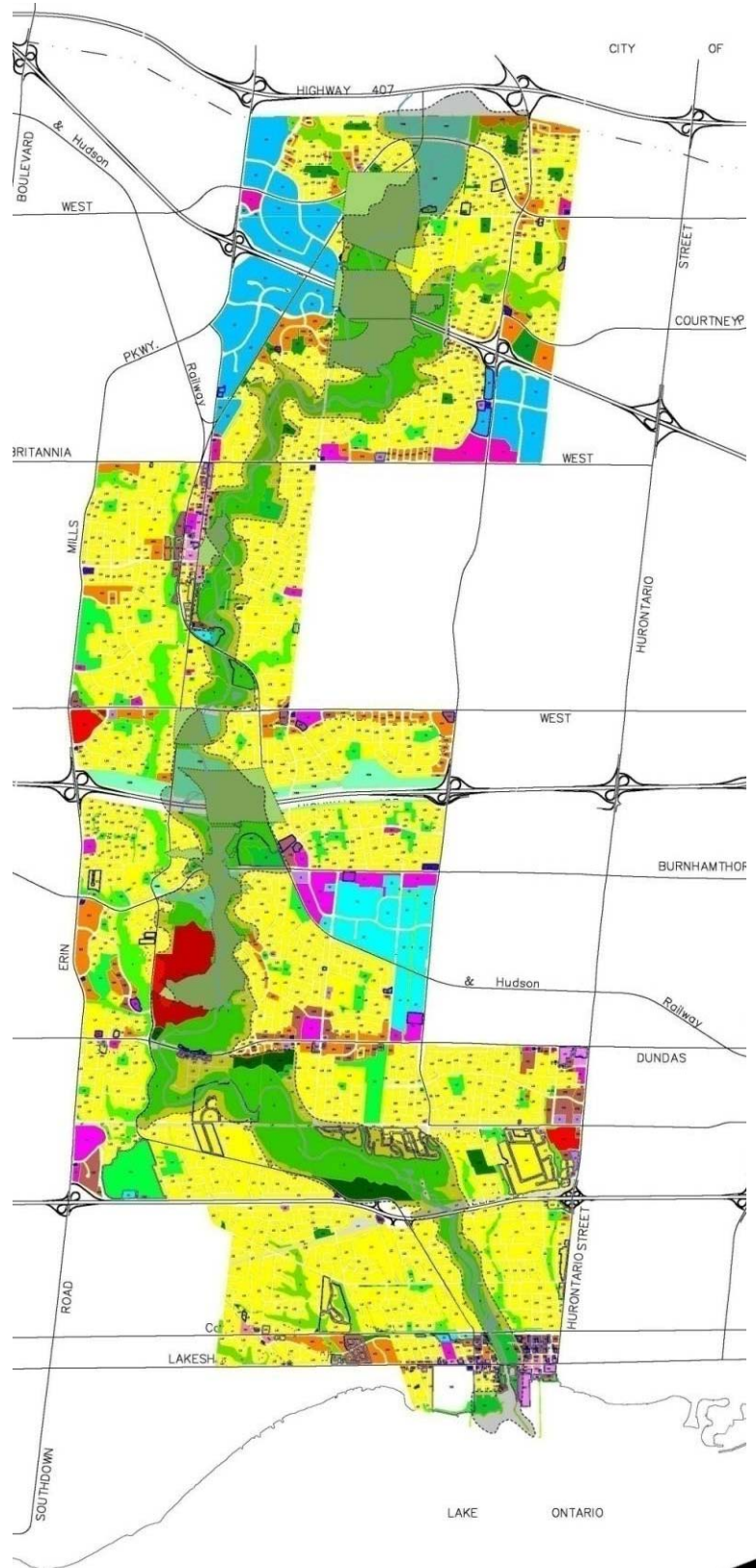


3. Study Context

Land Use

- 60km Total Frontage
- 78% Urban
- 22% Open Space

LDI	Residential - Low Density I
LDII	Residential - Low Density II
MDI	Residential - Medium Density
MDII	Residential - Medium Density
MDIII	Residential - Medium Density
HDI	Residential - High Density I
HDII	Residential - High Density II
GC	General Retail Commercial
CC	Convenience Retail Commer
MC	Mainstreet Retail Commercia
MVC	Motor Vehicle Commercial
O	Office
BE	Business Employment
OS	Public Open Space
PQS	Private Open Space
G	Greenbelt
INST	Institutional
PBW	Parkway Belt West
UT	Utility
TBD	To Be Determined

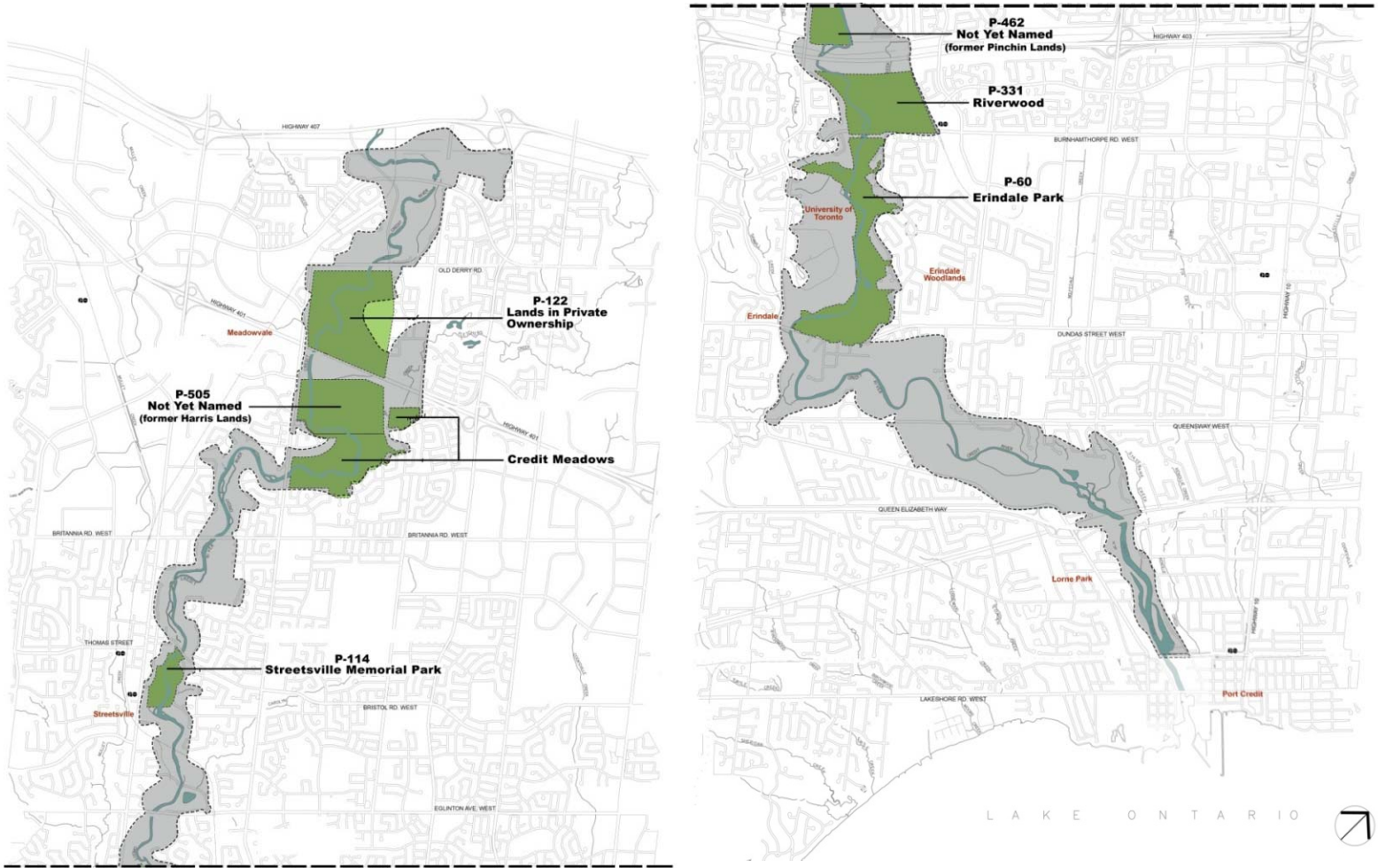


* Adapted from Schedule 10, Mississauga Official Plan, Sept 2010





4. Study Area – Feature Sites



North

South





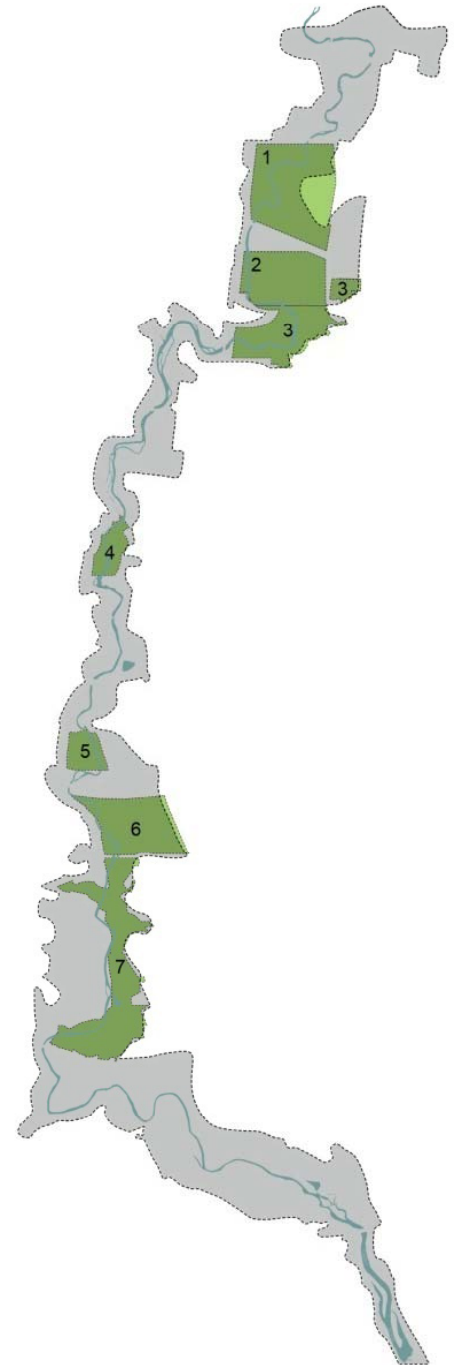
4. Study Area and Floodplain

- 39% of study area is within floodplain
- 54% of Feature Sites are within floodplain

Feature Sites



Study Area





5. Review of Policy and Background Studies

Objective: *examine the alignment of existing and proposed policy initiatives as they relate to the public lands adjacent the Credit River.*

A list of background studies were provided to the study team by the City and have been reviewed by the consultant team. The information was from the following sources:

- **Government of Canada (7 publications)**
- **Province of Ontario (3 publications)**
- **Ministry of Transportation (3 publications)**
- **Region of Peel (1 publication)**
- **Credit Valley Conservation Authority (6 publications)**
- **City of Mississauga (19 publications)**



5. Summary – Fundamental Policy Directions

Natural Heritage

- Protect / enhance natural heritage features and functions
- Protect / enhance aquatic habitat
- Enhance connectivity
- Protect habitat for species at risk, endangered species
- Enhance canopy cover

Cultural Heritage / Archaeology

- Protect / enhance / celebrate cultural heritage features and landscape

Transportation

- Provide a transit supportive multi-modal transportation system
- Maintain navigation within Credit River

Water Resources

- Protect / enhance surface and groundwater quality
- Manage stormwater quantity

Natural Hazards

- Focus development / site alteration away from hazard lands and floodways (except in SPA areas)





5. Summary – Fundamental Policy Directions

Community

- Support healthy active living
- Provide cultural, social and recreational amenity
- Accommodate all members of the community

Sustainability

- Improvement sustainable building / development solutions
- Ensure financial sustainability
- Implement sustainable management practices

Public Safety

- Ensure public safety through hazard avoidance and application of CPTED principles





5. Summary – Recommendations (from Future Directions)

Master Plan for Recreation, Parks and Natural Areas

Mississauga's Population is Growing & Evolving Much Faster than Expected

- Enhance the service delivery model for older adults focusing on wellness and active living
- Focus upon integration of immigrants and ethnic groups into recreation program opportunities

Providing Inclusive Services is a Priority

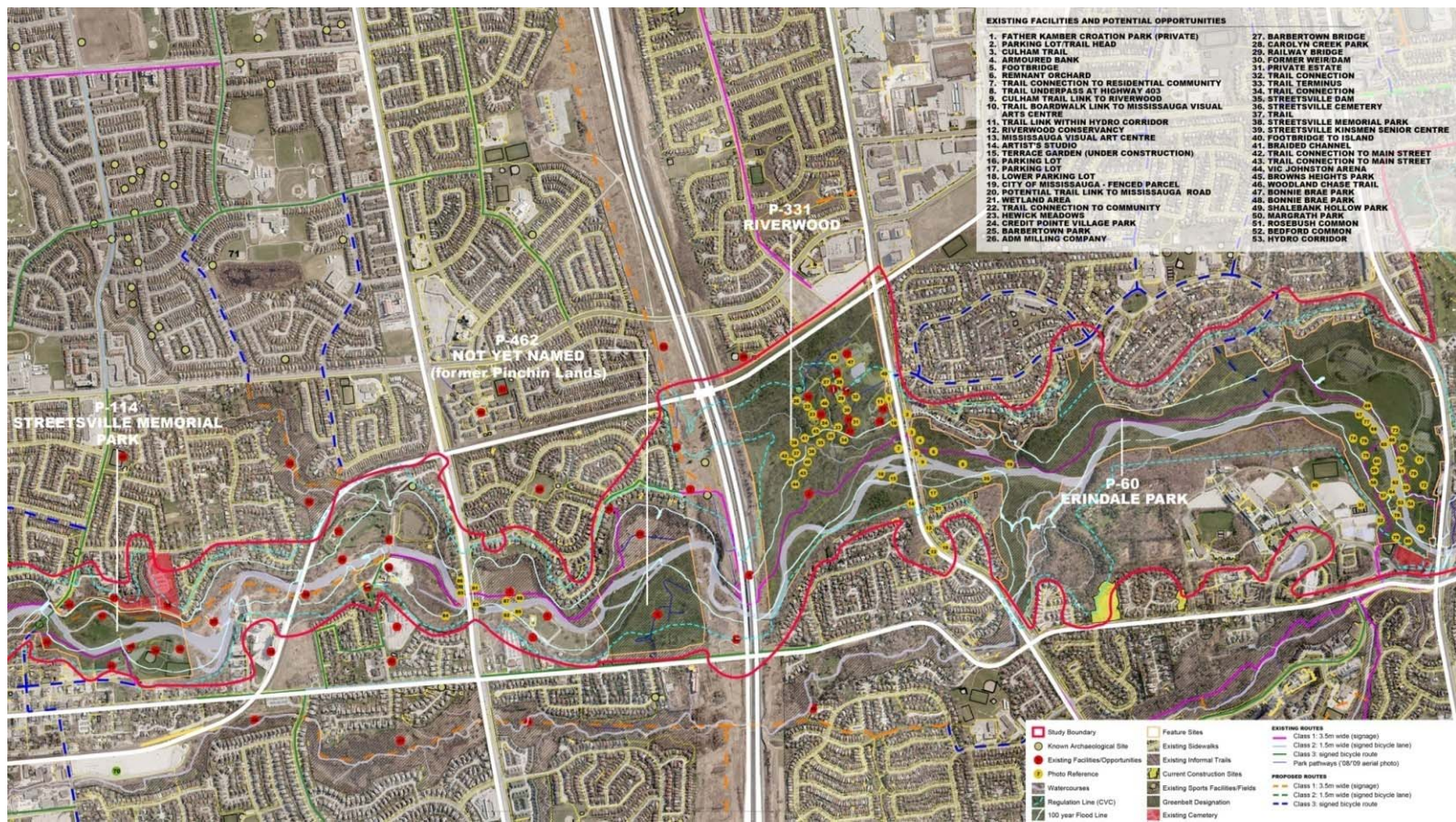
- Continue to offer inclusive activities as well as adaptive programming and facilities
- Consider accessibility as a driver to all physical development
- Facilitate the provision of outreach activities at high risk schools

Delivering Services Effectively and Sustainably

- Strive to incorporate current and emerging best practices in facility and program design
- Generally consider environmental stewardship, safety and aesthetics in the park system
- Create a targeted strategy aimed at recruiting and retaining the number of volunteers involved in the delivery of recreation services
- Continue to facilitate volunteer-based networking

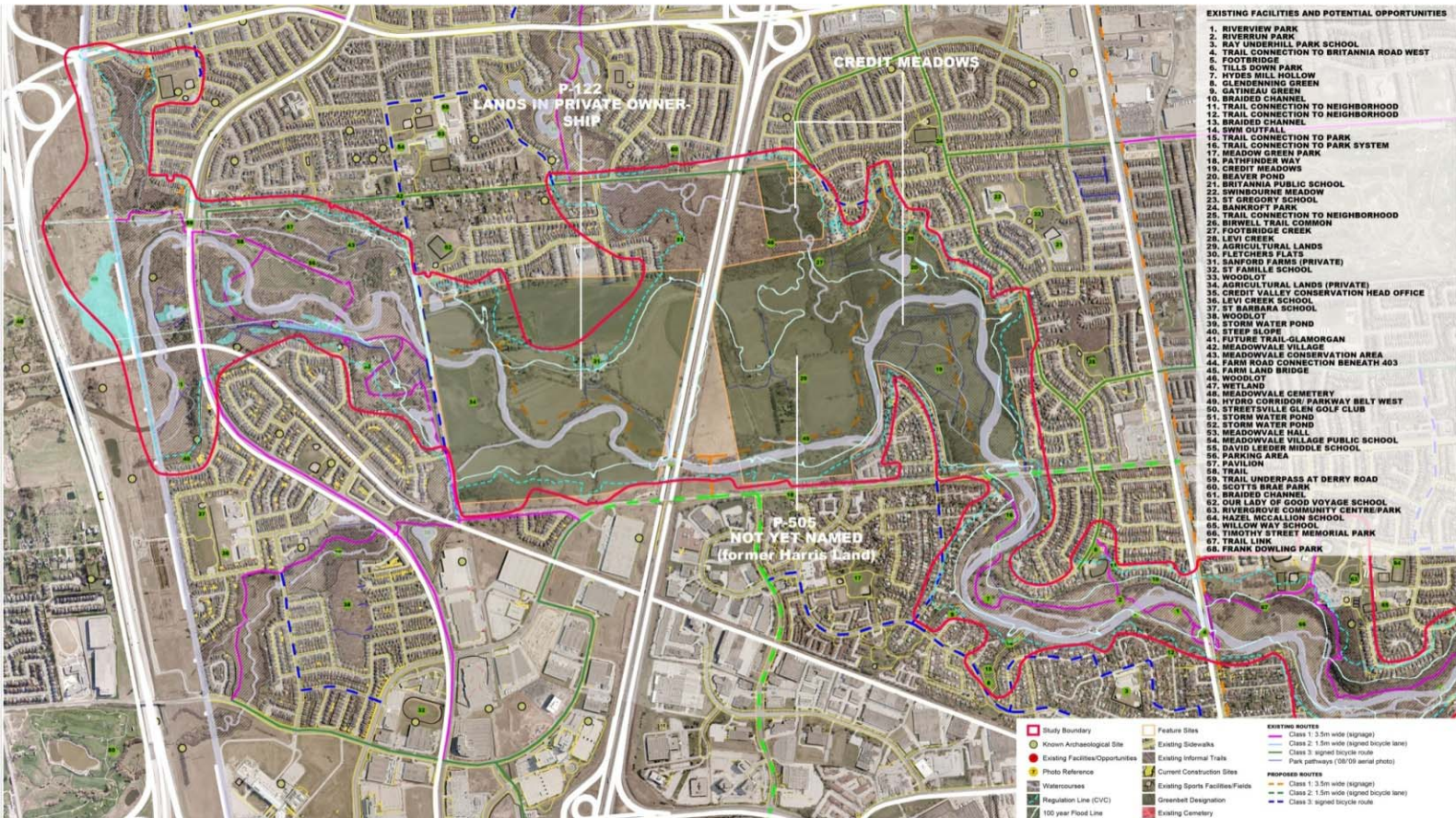


6. Inventory and Landscape Assessment



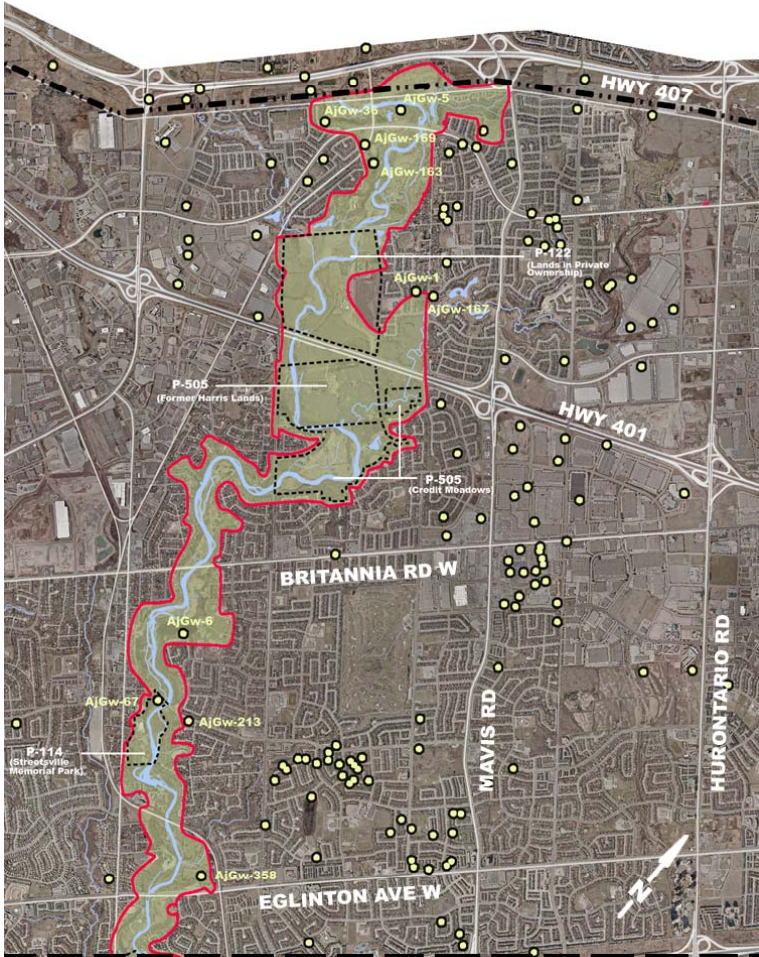


6. Inventory and Landscape Assessment



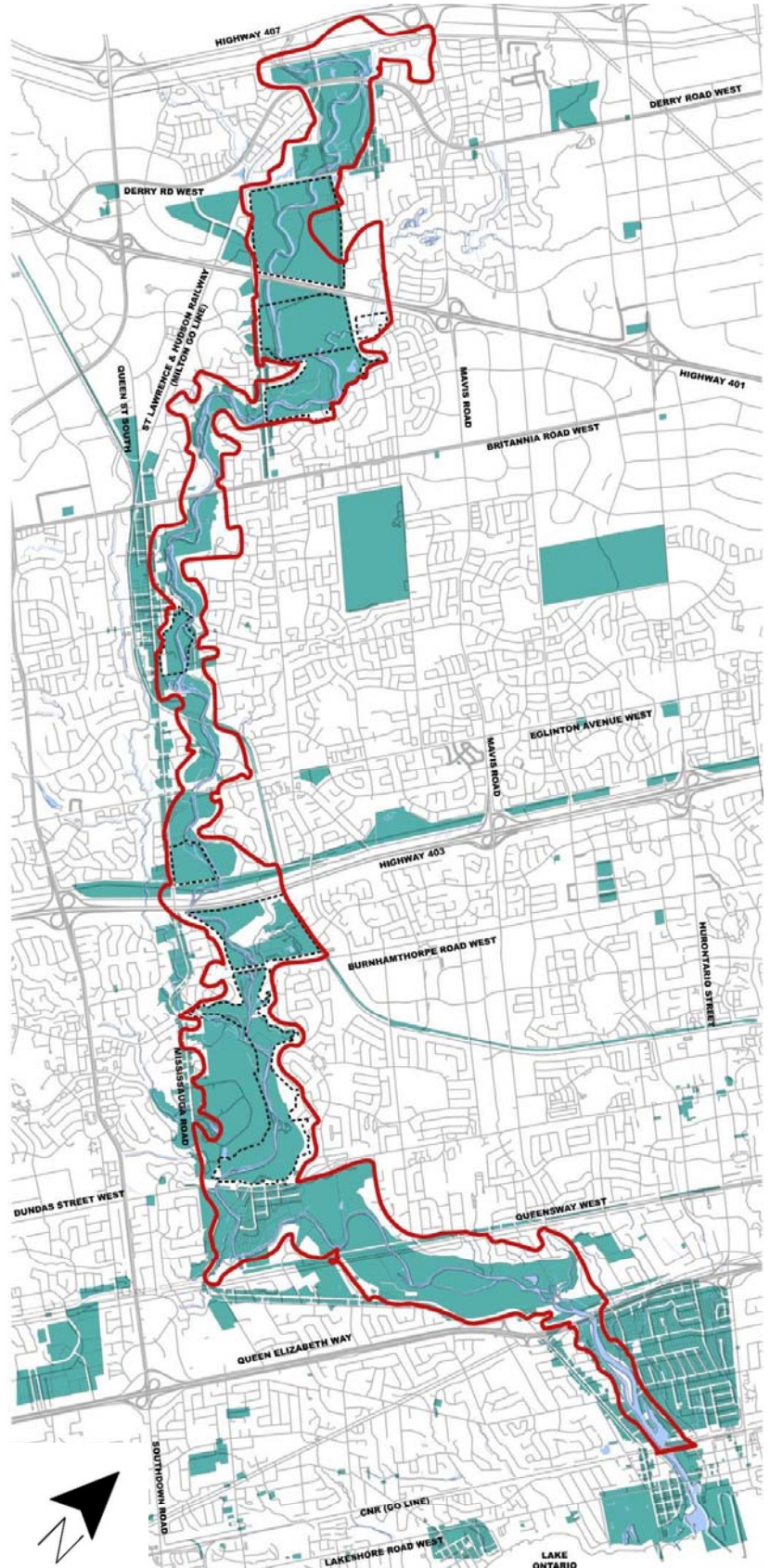


7. Support Study – Archaeological Resources








7. Support Study – Cultural Heritage Sites



LEGEND

-  Listed Heritage Properties
-  Study Boundary
-  Feature Sites





7. Support Study – Cultural & Archaeological Heritage

Preliminary Interpretation Opportunities

Opportunities for interpretation which could be developed and integrated within the parks strategy may include:

- Illustration of the evolution of the built heritage environment through settlement history
- Recognition of the cultural heritage landscape resources that defined the settlements
- Commemoration of the families and events that shaped the Study Area Context
- Celebration of the complex cultural and historical legacies of the Credit River corridor
- Early aboriginal campsites along the river
- Iroquoian villages (as there was arable land adjacent to the river)
- Euro Canadian milling sites - grist and clothing mills



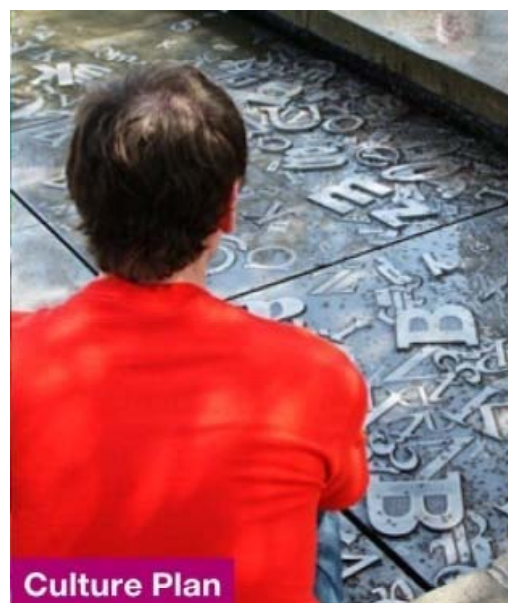


7. Support Study – Cultural & Archaeological Heritage

Preliminary Interpretation Opportunities

A potential hierarchy of themes which could be developed and integrated within the parks strategy may include:

- First Nations Heritage
- Governance History
- Early Land Settlement Patterns
- Cultural Heritage Resources and Landscapes
- Evolution of Built Heritage Environment
- Agriculture/ Urban Agriculture
- Industry and Commerce
- Transportation
- Education
- Family History





8. Ecological Inventory and Assessment

Tasks Completed:

Assembly and summarization of background data included:

- Data records from the Natural Area System (NAS) database and Credit Valley Conservation (CVC) were compiled and organized per Natural Area System (NAS) sites
- Ecological Land Classification data
- Verification of available data: watercourses, vegetation, slopes, wetlands
- Significant species and features were identified
- Preliminary analysis was conducted

Application of Ecological Information:

- Assessment of sensitivity
- Guidance for management and parks planning

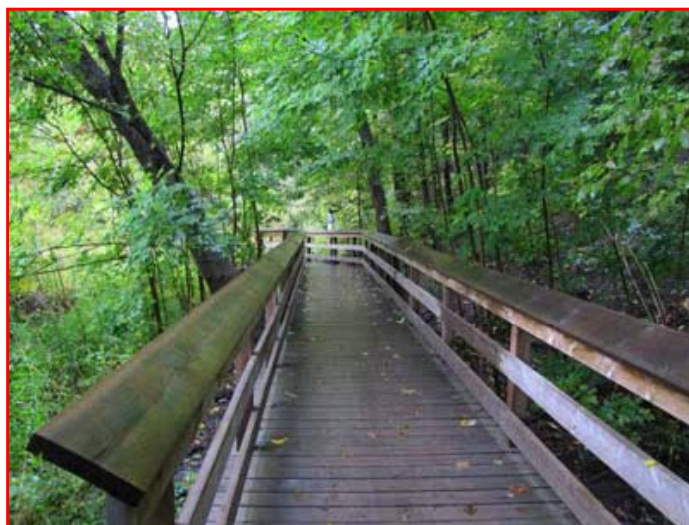




8. Ecological Inventory and Assessment

The following categories were used to summarize the available data and describe each site:

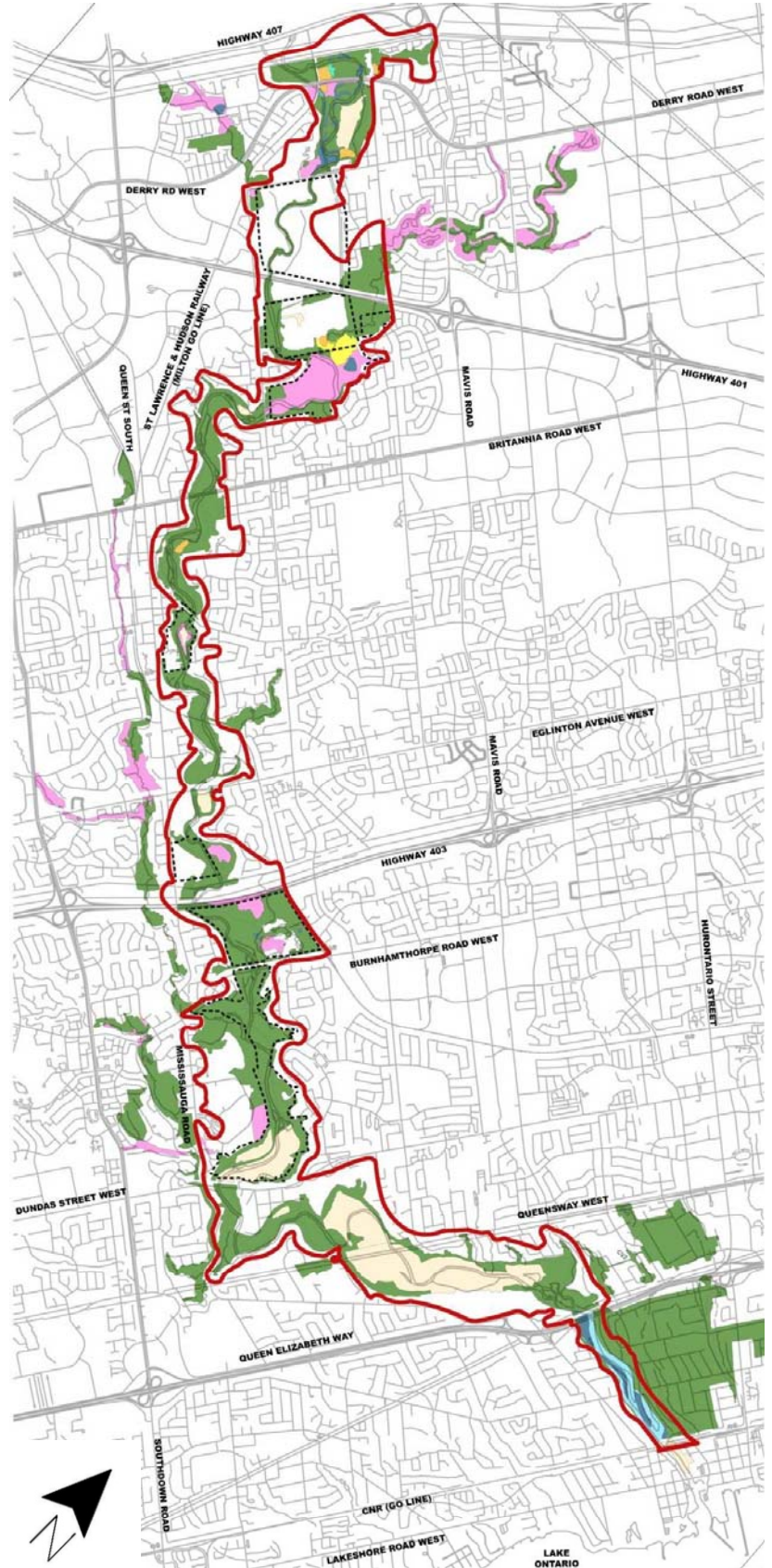
- Total no. of plants
- Non-native species
- Vegetation quality
- Vegetation communities
- Wildlife
- Locally rare plant species
- Bird Species of Conservation Concern
- Area sensitive birds
- Ground nesting birds
- Special features
- Management issues





8. Ecological Land Classification Mapping

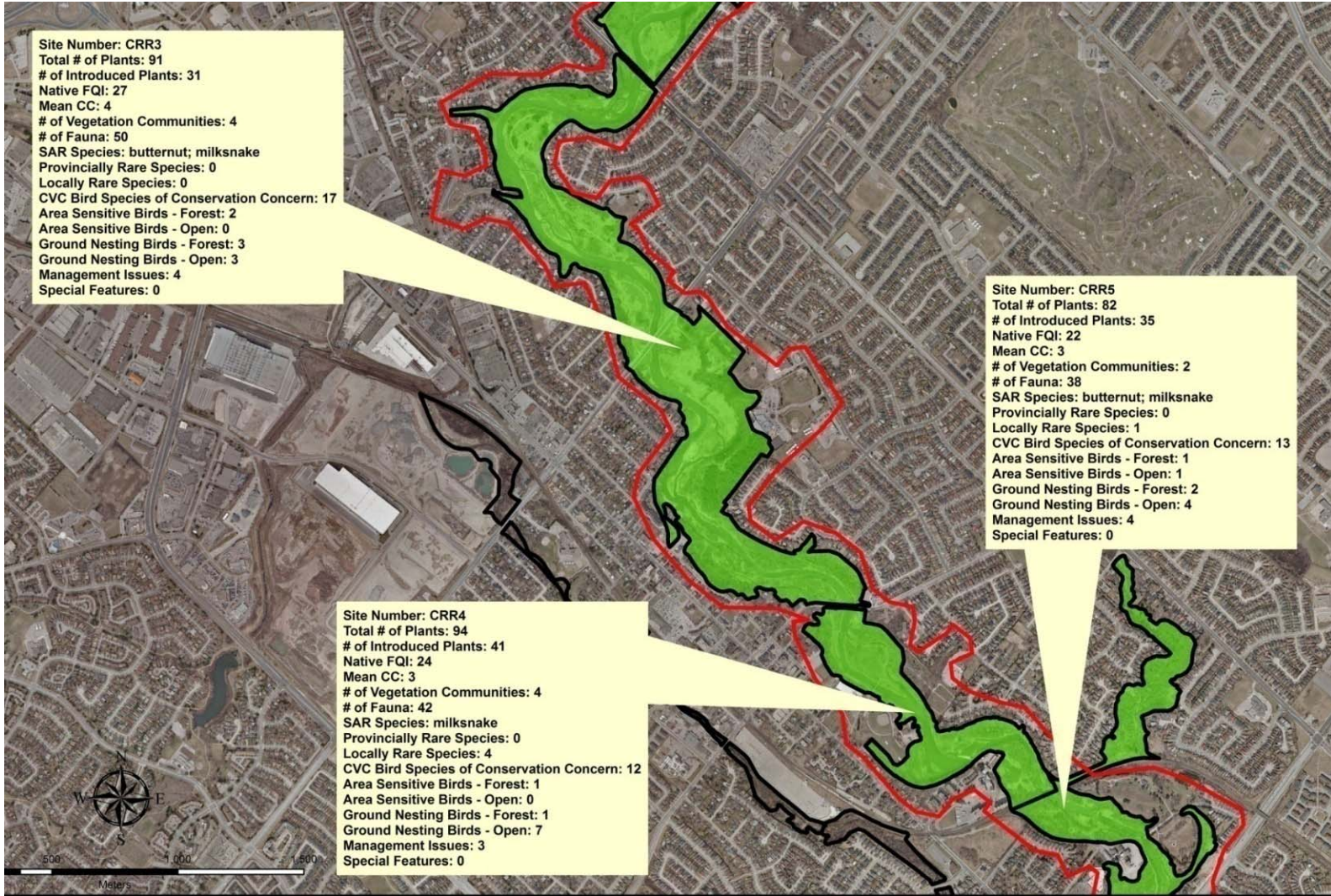
- Forest
- Marsh
- Meadow
- Plantation
- Savannah
- Shallow Aquatic
- Swamp
- Unclassified





8. Natural Area Systems Mapping

**Note only portion of site shown*





8. Summary - Landscape and Ecological Assessment

The key issues arising from the inventory and background review include:

- Requirements for conformity with extensive policies and regulations
- Private land ownership
- Ecological sensitivity – high sensitivity within many parts of the parks system
- Natural hazards – flood plain, slope stability, ice, potential impacts on natural and cultural heritage resources from uses, geomorphic change
- Barriers to connectivity – railways and roads, topography and environmental sensitivity
- Integration with existing facilities – UTM, Riverwood, Erindale Park
- Public safety
- Requirements for accessibility





9. Introduction to the Public Engagement Program

The Guiding Principles of the program:

Objectivity & Transparency: The project process will be conducted in a transparent, systematic way, such that decisions are traceable and readily understood by stakeholders.

Comprehensiveness: The Project Team will ensure that there are multiple opportunities for stakeholder participation

Evidence-Based: The Project Team will provide stakeholders with credible information

Inclusiveness: The project team will strive to engage a broad spectrum of stakeholders – reflecting the diverse and complex stakeholder environment throughout Mississauga

Accessibility: The Project Team will ensure that stakeholders are given information that is understandable, empowering them to provide informed input into the study process.

Accountability: The consultation approach will be accountable to those involved, ensuring that good record keeping and reporting of the processes and outcomes are conducted.



9. Introduction to the Public Engagement Program

Key Consultation Dates (Approximate) :

Stakeholder and Community Meeting # 1	November 2010
Web Survey	November - January 2011
Places and Spaces Forum	November - January 2011
Stakeholder Meeting # 2	February 2011
Community Meeting # 2	February 2011
Stakeholder and Community Meeting # 3	May 2011
Community Meeting # 4	October 2011





9. Introduction to the Public Engagement Program

Upcoming Places and Spaces Potential Venue Locations:

Streetsville Tree Lighting Ceremony

Streetsville and Queen Streets

Santa Clause Parade

Streetsville and Queen Streets

A Christmas Special

Meadowvale Theatre

Hot Chocolate and Wild Birds

Riverwood Conservancy

Tim Horton's Pub

Hershey Centre

Chamber Music Society

Art Gallery of Mississauga

Orchestras

Living Art Centre

Chinese New Year

Square One Mall





10. Next Steps

- Upcoming public engagement – opportunities for you to participate in the process
 - Web survey
 - Places and Spaces Sessions
- Refinement of the inventory and assessment mapping
- Finalization of the in-field analysis
- Municipal Council Consultations - general input from Ward Councillors



10. Next Steps



The web survey:

- Applies only to the parks along the Credit River
- Will ask you questions about what types of activities and uses you prefer in the parks
- Enables you to provide your input to the Credit River Parks Strategy
- Results will inform the first phase of the planning process



Contact Information for the Credit River Parks Strategy

- **Connect to the project website**

www.mississauga.ca/creditriversstrategy

- **Email**

creditriversstrategy@mississauga.ca

- **Direct Phone Number**

905-615-3200 ext 4498



Your Feedback.....

1. Image Credit River Parks 25 years from now. What elements and activities would you like to see?
2. What would attract you to the Credit River Parks in the future?
3. What should the project team take into consideration as they develop a strategy for the Credit River Parks?
4. Is there any baseline information missing or needing correction on the maps?
5. Are there areas in the parks or adjacent to the parks that have issues?



Credit River Parks Strategy

Stakeholder and Community Meeting No. 1

Tower Garden Café, Mississauga Civic Centre

End of Presentation



SCHOLLEN & Company Inc

**Aquafor Beech ■ North-South Environmental Inc ■ Lura Consulting
GeoTerre ■ Urban Forest Innovations ■ Archaeological Services Inc
Poulos & Chung**